

**Australian
Bureau of
Statistics**

August 1996

EMBARGO: 11:30 AM (CANBERRA TIME) MON 3 FEB 1997

Trade Union Members

Australia

In this issue —

- ☐ Standard Employment benefits data

NOTES

SYMBOLS AND OTHER USAGES

n.a. not available
* subject to sampling variability too high for most practical uses
. . . not applicable

Because estimates have been rounded, discrepancies may occur between sums of the component items and totals.

INQUIRIES

For further information about statistics in this publication and the availability of related unpublished statistics, contact:

Central office	Michael Jones	Telephone	(06) 252 6503
		Facsimile	(06) 252 7784
State offices	See page 35 for contact numbers		

For information about other ABS statistics and services, refer to the back of this publication.

CONTENTS

		Page
	Preface	4
	Summary of findings	5
TABLES		
Trade union membership	1 Selected characteristics of trade union members, August 1990, August 1992, August 1994 and August 1996	9
	2 Selected characteristics of trade union members and full-time or part-time status, August 1996	10
	3 Industry, August 1996	13
	4 Age and whether children under 15 present, August 1996	15
<i>Permanent/casual employee</i>	5 Industry, August 1996	16
	6 Occupation, August 1996	18
Standard employment benefits	7 Selected characteristics of employees and standard benefits received, August 1996	19
	8 Selected characteristics of employees, superannuation coverage and full-time or part-time status, August 1996	22
ADDITIONAL INFORMATION		
	Explanatory notes	24
	Technical notes	28
	Data available from this survey	31
	How to order special tables from this survey	34
	Supplementary and special surveys	35
	Glossary	36

PREFACE

ABOUT THIS PUBLICATION

This publication presents information about trade union membership of employees in connection with their main job. Also included in this publication are data on standard employment benefits received by employees in their main job.

Statistics in this publication were obtained from the Australian Bureau of Statistics (ABS) survey, Trade Union Members.

ABOUT THIS SURVEY

The Trade Union Members survey was conducted throughout Australia in August 1996 as a supplement to the ABS monthly Labour Force Survey.

Data from the survey relate to persons who were employees in August 1996. The labour force characteristics of these persons relate to the person's main job, that is the one in which most hours were worked.

The survey provides information about the level of trade union membership in Australia, as well as demographic and labour force characteristics of trade union members and non-members. The survey also provides information about superannuation coverage, and the type of standard employment benefits (e.g. sick leave, holiday leave, long-service leave and superannuation) provided by employers.

W. McLennan
Australian Statistician

Australian Bureau of Statistics
February 1996

SUMMARY OF FINDINGS

TRADE UNION MEMBERSHIP

In August 1996, 31% of Australia's 7,062,100 employees aged 15 years and over were trade union members (in connection with their main job).

Declining membership continues

The proportion of employees who were trade union members in connection with their main job has been steadily declining since August 1986. Between August 1986 and August 1996, the level of trade union membership reported by employees declined by around one-third (15 percentage points).

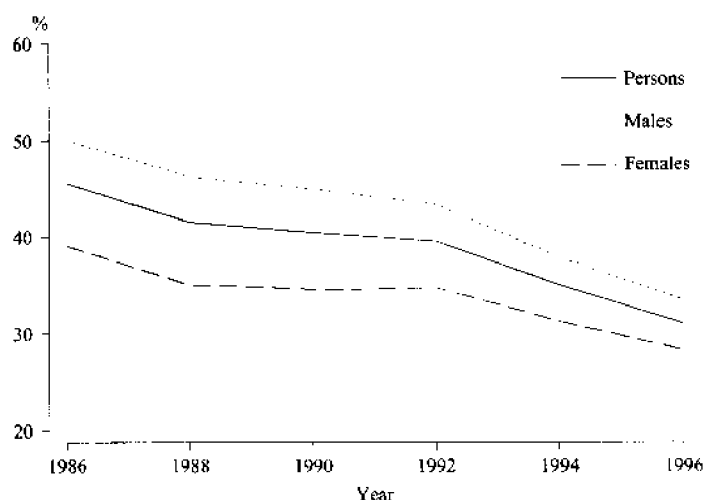
TRADE UNION MEMBERSHIP 1986-96

August	Males		Females		Persons	
	'000	%	'000	%	'000	%
1986	1 685.1	50	908.8	39	2 593.9	46
1988	1 640.2	46	895.7	35	2 535.9	42
1990	1 683.8	45	975.8	35	2 659.6	41
1992	1 536.1	43	972.7	35	2 508.8	40
1993	1 437.7	41	939.2	33	2 376.9	38
1994	1 375.8	38	907.5	31	2 283.4	35
1995	1 349.7	36	902.0	29	2 251.8	33
1996	1 307.5	34	886.8	28	2 194.3	31

The largest decrease for any two-year period was recorded between 1992 and 1994 (five percentage points), with the 1986-88 and 1994-96 periods recording decreases of four percentage points. The smallest decrease recorded was for 1990-92 at one percentage point.

For both males and females there was a four percentage point drop between 1986 and 1988. While union membership remained steady at 35% between 1988 and 1992 for females, membership levels fell three percentage points for males (from 46% to 43%) over the same period. From 1992, a marked fall in membership levels was apparent for both males and females.

PROPORTION OF ALL EMPLOYEES WHO WERE TRADE UNION MEMBERS, AUGUST 1986 TO AUGUST 1996



Membership in the public sector decreased from 67% in 1990 to 55% in 1996. For private sector employees the rate declined from 31% in 1990 to 24% in 1996.

Between 1992 and 1996, membership levels fell nine percentage points to 35%, and for part-time employees three percentage points to 22%. The mining industry recorded the largest decrease in membership levels (falling 24 percentage points to 39% between 1990 and 1996), while retail trade recorded the smallest decrease over the same period (two percentage points to 23%).

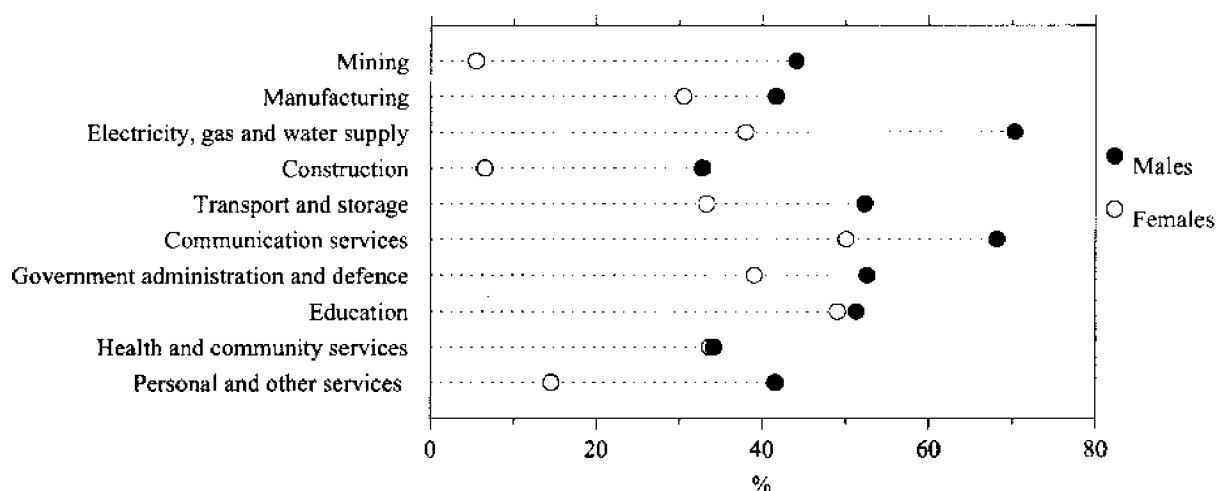
Age of members In August 1996 employees aged 55–59 years had the highest rate of trade union membership (39%). The highest rate for part-time employees was recorded for employees aged 35–44 years (26%), whilst for full-time employees the highest rate was recorded for employees aged 55–59 years (45%).

State/Territory membership In August 1996, Tasmania had the highest level of trade union membership at 39%, followed by South Australia with 35%. The Northern Territory had the lowest membership rate at 23%.

Industry In August 1996, the highest rates of trade union membership were recorded in the Electricity, gas and water supply industry (70% of male employees and 38% of female employees) and the Communication services industry (68% of male employees and 50% of female employees).

The lowest rates of trade union membership were recorded in the Agriculture, forestry and fishing industry (7% of male employees and 5% of female employees), Property and business services (13% of male employees and 9% of female employees) and the Wholesale trade industry divisions (17% of male employees and 9% of female employees).

PROPORTION OF ALL EMPLOYEES WHO WERE TRADE UNION MEMBERS AND
SELECTED INDUSTRIES, AUGUST 1996

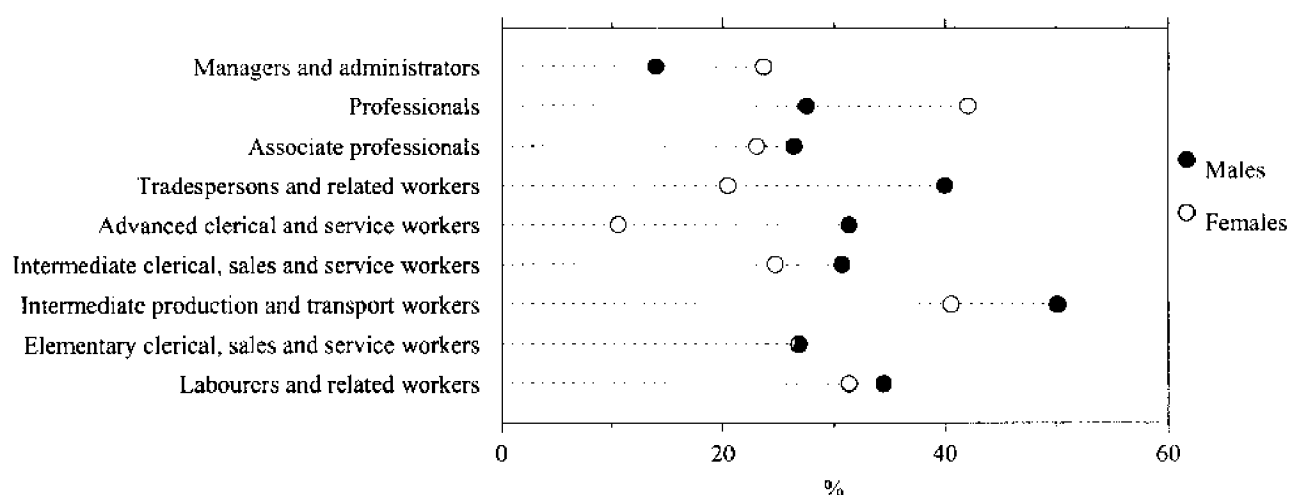


A higher proportion of male employees were trade union members (34%) than females (28%). The difference was most marked in the Mining industry (39 percentage points) and least apparent in the Health and community services (less than one percentage point) and Education industries (2 percentage points).

Occupation In August 1996, the highest level of trade union membership was recorded for the occupation group Intermediate production and transport workers, (e.g. plant and machine operators) where 49% were members (50% of males and 41% of females). The lowest level was recorded for the Advanced clerical and service workers occupation, where 13% of employees were members (31% of males and 11% of females).

Males recorded a higher rate of trade union membership than females in all occupations except Managers and administrators (24% of males and 14% of females) and Professionals (42% and 28% respectively).

PROPORTION OF ALL EMPLOYEES WHO WERE TRADE UNION MEMBERS AND OCCUPATION, AUGUST 1996



Full-time or part-time status Some 35% of full-time employees and 22% of part-time employees were trade union members. Male full-time employees reported slightly higher rates of trade union membership (36%) than female employees (32%). This pattern was reversed for part-time employees (23% for females, 18% for males), reflecting the relatively high proportion of female part-time employees.

Permanent or casual employee Permanent employees were more likely to be trade union members than casual employees (37% compared with 13%). A similar proportion of full-time permanent employees (37%) and part-time permanent employees (38%) were members of a trade union. Of casual employees, 11% of full-timers and 14% of part-timers were trade union members.

Sector The public sector had a markedly higher union membership rate at 55% than the private sector at 24%. In both the public and the private sectors, males reported higher union membership levels at 61% (public) and 27% (private) than females, at 50% and 21% respectively.

STANDARD EMPLOYMENT BENEFITS

In August 1996, 97% of full-time employees and 69% of part-time employees received standard employment benefits such as superannuation, sick leave, holiday leave or long-service leave in their main job.

Public sector employees (96%) were more likely to receive standard benefits than their private sector (87%) counterparts.

Associate professionals (such as science, engineering and business professionals) were most likely to receive standard benefits (95%). Employees in the Elementary clerical, sales and service workers occupation group were least likely to receive standard benefits (74%).

Males (91%) were more likely to receive a standard benefit than females (87%). The lowest receipt of standard benefits was recorded for the youngest and oldest age groups. Some 63% of males aged 15-19 years received a standard benefit compared to 51% of females in the same age group. For males aged 65 years and over 60% received a standard benefit whilst females in the same age group recorded 42%.

PROPORTION OF ALL EMPLOYEES WHO RECEIVED STANDARD EMPLOYMENT BENEFITS BY AGE GROUP, AUGUST 1996

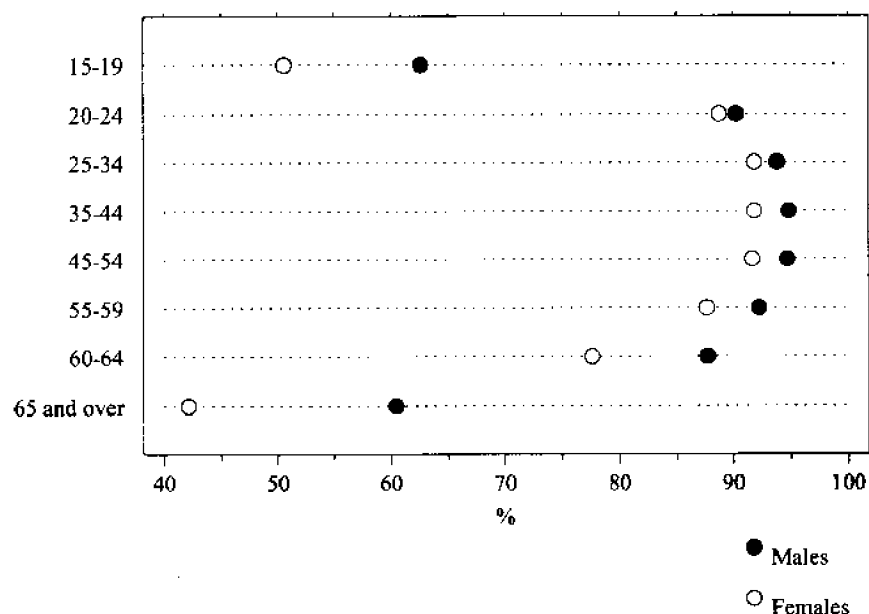


TABLE 1. SELECTED CHARACTERISTICS OF TRADE UNION MEMBERS(a)

	August 1990		August 1992		August 1994		August 1996		Total employees '000
	'000	%	'000	%	'000	%	'000	%	
Sex —									
Male	1,683.8	45.0	1,536.1	43.4	1,375.8	37.9	1,307.5	33.5	3,903.3
Female	975.8	34.6	972.7	34.8	907.5	31.3	886.8	28.1	3,158.8
State or Territory of usual residence									
New South Wales	907.3	41.0	818.3	37.9	783.1	35.6	731.9	30.7	2,383.6
Victoria	719.4	40.8	672.2	41.4	573.3	34.7	576.9	31.9	1,808.1
Queensland	410.1	38.5	409.7	38.1	395.9	34.3	395.4	31.4	1,258.7
South Australia	241.8	44.5	225.6	44.3	215.7	41.4	188.3	35.1	536.7
Western Australia	218.6	35.4	226.3	37.0	177.8	27.9	174.2	25.0	697.5
Tasmania	85.0	52.2	78.4	50.5	67.0	42.9	64.3	39.3	163.4
Northern Territory	26.7	41.7	23.7	36.5	19.9	29.7	17.0	22.5	75.6
Australian Capital Territory	50.7	37.7	54.6	39.8	50.6	36.7	46.3	33.4	138.5
Age group (years) —									
15-19	158.6	25.0	114.5	22.6	100.1	19.3	103.2	18.5	559.3
20-24	316.5	33.5	290.0	31.5	252.9	26.7	232.3	24.0	966.3
25-34	755.2	42.3	692.1	40.5	601.4	34.4	549.0	29.5	1,862.8
35-44	725.0	43.5	705.4	43.0	670.6	40.5	637.6	35.9	1,774.4
45-54	472.5	45.6	518.2	46.5	484.3	40.2	492.0	36.1	1,364.5
55-59	140.4	49.6	126.0	45.7	122.8	42.9	130.9	38.6	339.6
60-64	85.0	47.1	58.1	44.9	48.2	39.1	42.1	29.2	144.0
65 and over	6.4	21.1	4.6	12.7	*3.1	*8.1	7.3	14.1	51.3
Birthplace									
Born in Australia	1,932.7	39.7	1,863.7	38.9	1,722.1	34.7	1,660.4	31.0	5,353.9
Born outside Australia	726.8	42.8	645.1	41.6	561.3	35.8	533.9	31.3	1,708.2
Main English speaking countries	293.7	38.4	267.4	38.2	241.0	33.5	216.6	28.6	756.5
Other	433.2	46.5	377.8	44.4	320.3	37.7	317.3	33.3	951.7
Industry —									
Agriculture, forestry and fishing	16.8	12.9	17.0	12.8	17.0	12.4	10.5	6.6	158.7
Mining	57.9	62.9	48.6	57.6	34.4	44.5	33.0	38.5	85.8
Manufacturing	514.7	46.2	450.0	44.5	421.6	40.8	410.1	38.7	1,059.6
Electricity, gas and water supply	83.2	79.4	80.9	77.2	60.3	66.4	45.1	65.4	68.9
Construction	171.5	45.2	124.5	42.1	113.4	34.1	109.6	29.7	369.3
Wholesale trade	86.5	18.9	72.5	16.6	61.4	14.6	65.2	14.8	442.0
Retail trade	220.9	24.8	219.0	25.6	216.6	23.3	232.1	22.5	1,030.4
Accommodation, cafes and restaurants	65.7	23.7	69.3	22.7	61.7	19.3	52.7	15.4	341.5
Transport and storage	182.2	58.1	167.6	59.5	154.8	51.9	155.5	48.0	323.7
Communication services	112.9	74.8	91.0	75.6	81.6	65.6	94.4	62.1	152.1
Finance and insurance	150.4	43.8	145.7	47.1	129.2	42.4	103.9	34.0	305.7
Property and business services	98.9	20.8	96.3	19.5	80.7	14.6	76.8	11.4	672.7
Government administration and defence	219.7	60.0	210.5	60.7	190.5	54.7	173.5	46.9	369.9
Education	298.2	58.1	329.8	59.9	305.3	56.1	287.0	49.9	575.5
Health and community services	258.7	41.3	266.6	40.7	240.0	37.0	242.5	33.8	716.8
Cultural and recreational services	42.7	37.1	35.4	29.3	33.6	23.8	35.4	22.9	154.7
Personal and other services	78.8	36.5	84.2	36.6	81.4	36.6	67.0	28.5	234.9
Sector —									
Public	1,184.2	66.8	1,151.5	67.1	1,006.1	62.3	883.6	55.4	1,594.8
Private	1,475.3	30.8	1,357.3	29.4	1,277.2	26.0	1,310.7	24.0	5,467.3
Permanent or casual employee —									
Permanent	2,420.5	45.7	2,265.1	46.0	2,056.2	41.3	1,953.5	37.4	5,220.9
Casual	239.0	18.8	243.7	17.2	227.2	14.7	240.8	13.1	1,841.2
Full-time or part-time status —									
Full-time	2,315.8	44.7	2,113.7	44.3	1,904.7	39.1	1,783.1	34.5	5,162.6
Part-time	343.8	25.1	395.1	25.2	378.7	22.9	411.2	21.6	1,899.6
Total	2,659.6	40.5	2,508.8	39.6	2,283.4	35.0	2,194.3	31.1	7,062.1

(a) See Explanatory Notes for factors affecting comparability between surveys. Total used to calculate the proportion includes those who did not know their membership status.

TABLE 2. SELECTED CHARACTERISTICS OF TRADE UNION MEMBERS AND FULL-TIME OR PART-TIME STATUS, AUGUST 1996

	Trade union member			All employees(a)			Proportion of all employees who were trade union members		
	Full-time	Part-time	Total	Full-time	Part-time	Total	Full-time	Part-time	Total
MALES									
				— '000 —			— per cent —		
<i>State or Territory of usual residence —</i>									
New South Wales	408.3	31.8	440.1	1,155.0	161.6	1,316.6	35.3	19.7	33.4
Victoria	322.6	21.2	343.9	875.0	133.0*	1,007.9	36.9	16.0	34.1
Queensland	218.5	19.5	238.0	596.7	101.7	698.4	36.6	19.2	34.1
South Australia	98.4	9.6	108.1	245.5	44.2	289.7	40.1	21.8	37.3
Western Australia	97.4	5.8	103.3	335.2	48.7	383.9	29.1	12.0	26.9
Tasmania	35.3	*2.9	38.1	79.3	12.8	92.1	44.5	*22.2	41.4
Northern Territory	10.1	*0.3	10.4	35.9	5.1	41.0	28.2	*6.5	25.5
Australian Capital Territory	23.6	*2.0	25.6	62.8	10.9	73.7	37.6	*18.1	34.7
<i>Age group (years) —</i>									
15-19	26.1	31.7	57.8	133.5	149.4	282.8	19.6	21.2	20.4
20-24	108.7	21.2	130.0	400.7	107.5	508.2	27.1	19.7	25.6
25-34	325.7	13.1	338.8	969.0	87.0	1,056.0	33.6	15.1	32.1
35-44	352.1	11.6	363.7	902.3	56.7	959.0	39.0	20.4	37.9
45-54	289.4	7.5	296.9	703.5	52.8	756.4	41.1	14.2	39.3
55-59	77.3	4.7	82.0	177.6	27.3	204.9	43.5	17.4	40.0
60-64	30.2	*2.5	32.8	80.7	19.2	99.8	37.5	*13.2	32.8
65 and over	4.6	*0.8	5.4	18.0	18.1	36.1	25.5	*4.5	15.0
<i>Birthplace —</i>									
Born in Australia	901.4	75.6	977.0	2,491.5	405.2	2,896.7	36.2	18.7	33.7
Born outside Australia	312.9	17.6	330.5	893.9	112.8	1,006.7	35.0	15.6	32.8
Born in main English speaking countries	128.3	7.9	136.3	388.2	46.0	434.2	33.1	17.2	31.4
Born in other countries	184.5	9.7	194.2	505.7	66.8	572.5	36.5	14.5	33.9
<i>Type of standard employment benefit received —</i>									
Superannuation	1,193.0	69.2	1,262.2	3,163.5	272.0	3,435.4	37.7	25.4	36.7
Holiday leave	1,154.5	28.4	1,182.9	2,945.4	80.8	3,026.2	39.2	35.2	39.1
Sick leave	1,152.2	28.0	1,180.2	2,935.7	80.9	3,016.6	39.2	34.7	39.1
Long-service leave	1,114.3	22.0	1,136.4	2,616.6	58.9	2,675.5	42.6	37.4	42.5
<i>Industry —</i>									
Agriculture, forestry and fishing	8.2	*0.4	8.6	96.8	24.0	120.8	8.5	*1.8	7.1
Mining	32.1	*0.3	32.3	71.6	*1.7	73.4	44.8	*16.0	44.1
Manufacturing	316.1	8.8	324.8	736.5	43.1	779.6	42.9	20.4	41.7
Electricity, gas and water supply	40.9	*0.2	41.1	57.6	*0.9	58.5	71.1	..	70.3
Construction	104.0	*2.6	106.7	295.5	29.3	324.8	35.2	*9.0	32.8
Wholesale trade	49.3	*3.0	52.4	283.2	21.0	304.2	17.4	*14.5	17.2
Retail trade	55.8	40.7	96.5	335.8	151.6	487.4	16.6	26.9	19.8
Accommodation, cafes and restaurants	17.1	7.1	24.2	96.4	52.5	148.9	17.7	13.6	16.3
Transport and storage	125.2	5.6	130.8	225.9	23.4	249.4	55.4	23.8	52.4
Communication services	67.8	*0.8	68.6	98.4	*2.2	100.6	68.9	*36.6	68.2
Finance and insurance	37.3	*0.0	37.3	128.6	*2.7	131.4	29.0	*0.0	28.4
Property and business services	40.5	6.9	47.3	303.9	53.5	357.4	13.3	12.9	13.2
Government administration and defence	110.8	*1.6	112.4	197.1	16.4	213.5	56.2	*9.7	52.6
Education	93.9	6.0	99.9	164.3	30.4	194.6	57.2	19.8	51.3
Health and community services	50.7	*4.5	55.2	133.5	28.0	161.6	38.0	16.0	34.2
Cultural and recreational services	15.0	*3.6	18.7	51.7	24.1	75.8	29.1	15.1	24.6
Personal and other services	49.6	*1.0	50.6	108.6	13.2	121.7	45.7	*7.3	41.6
<i>Permanent or casual employee —</i>									
Permanent	1,162.4	29.5	1,191.9	2,984.1	90.3	3,074.4	39.0	32.7	38.8
Casual	51.8	63.7	115.5	401.3	427.7	828.9	12.9	14.9	13.9
<i>Sector —</i>									
Public	468.2	10.1	478.2	730.1	59.1	789.2	64.1	17.0	60.6
Private	746.1	83.1	829.2	2,655.3	458.8	3,114.1	28.1	18.1	26.6
Total	1,214.3	93.2	1,307.5	3,385.4	518.0	3,903.3	35.9	18.0	33.5

TABLE 2. SELECTED CHARACTERISTICS OF TRADE UNION MEMBERS AND FULL-TIME OR PART-TIME STATUS,
AUGUST 1996—continued

	Trade union member			All employees(a)			Proportion of all employees who were trade union members		
	Full-time	Part-time	Total	Full-time	Part-time	Total	Full-time	Part-time	Total
FEMALES									
	— '000 —						per cent —		
<i>State or Territory of usual residence</i>									
New South Wales	199.7	92.1	291.8	635.2	431.9	1,067.1	31.4	21.3	27.3
Victoria	147.1	85.9	233.1	444.0	356.1	800.1	33.1	24.1	29.1
Queensland	98.0	59.3	157.4	318.2	242.2	560.3	30.8	24.5	28.1
South Australia	45.6	34.7	80.3	120.2	126.8	247.0	37.9	27.4	32.5
Western Australia	45.2	25.8	71.0	167.2	146.4	313.6	27.0	17.6	22.6
Tasmania	14.0	12.2	26.1	32.1	39.2	71.3	43.5	31.1	36.7
Northern Territory	5.2	*1.3	6.6	22.3	12.4	34.7	23.4	*10.9	18.9
Australian Capital Territory	14.1	6.6	20.7	37.9	26.8	64.7	37.2	24.5	31.9
<i>Age group (years) —</i>									
15-19	8.2	37.3	45.5	74.2	202.2	276.4	11.0	18.4	16.4
20-24	68.5	33.8	102.3	304.1	154.0	458.1	22.5	22.0	22.3
25-34	155.2	54.9	210.2	532.0	274.8	806.8	29.2	20.0	26.0
35-44	172.9	100.9	273.9	430.1	385.2	815.4	40.2	26.2	33.6
45-54	126.3	68.7	195.0	348.4	259.8	608.2	36.3	26.5	32.1
55-59	31.8	17.1	48.9	66.2	68.4	134.6	48.0	25.0	36.3
60-64	5.2	*4.1	9.3	18.9	25.3	44.2	27.6	16.1	21.1
65 and over	*0.7	*1.1	*1.8	*3.3	11.9	15.2	*22.0	*9.3	*12.1
<i>Birthplace —</i>									
Born in Australia	428.5	255.0	683.4	1,362.2	1,095.0	2,457.2	31.5	23.3	27.8
Born outside Australia	140.4	63.0	203.4	415.0	286.6	701.6	33.8	22.0	29.0
Born in main English speaking countries	50.8	29.5	80.4	176.3	146.0	322.3	28.8	20.2	24.9
Born in other countries	89.6	33.4	123.0	238.7	140.6	379.3	37.5	23.8	32.4
<i>Type of standard employment benefit received</i>									
Superannuation	559.5	283.7	843.2	1,686.5	977.1	2,663.5	33.2	29.0	31.7
Holiday leave	554.7	198.4	753.0	1,604.7	506.2	2,110.9	34.6	39.2	35.7
Sick leave	553.0	201.0	754.0	1,600.3	506.9	2,107.1	34.6	39.7	35.8
Long-service leave	537.8	185.1	722.8	1,438.3	425.4	1,863.8	37.4	43.5	38.8
<i>Industry</i>									
Agriculture, forestry and fishing	*1.5	*0.4	*1.9	21.2	16.7	37.9	*6.9	*2.5	*5.0
Mining	*0.7	*0.0	*0.7	10.3	*2.2	12.5	*6.7	*0.0	*5.5
Manufacturing	72.1	13.2	85.3	214.2	65.7	280.0	33.7	20.0	30.5
Electricity, gas and water supply	*3.3	*0.6	*4.0	7.9	*2.6	10.4	*42.4	*24.8	38.0
Construction	*2.1	*0.8	*2.9	25.2	19.3	44.5	*8.3	*4.3	*6.5
Wholesale trade	9.4	*3.4	12.9	96.2	41.6	137.8	9.8	*8.2	9.3
Retail trade	41.7	93.9	135.6	194.1	349.0	543.0	21.5	26.9	25.0
Accommodation, cafes and restaurants	11.9	16.6	28.5	64.5	128.1	192.6	18.5	12.9	14.8
Transport and storage	19.8	5.0	24.8	53.5	20.9	74.4	37.0	23.9	33.3
Communication services	20.8	5.0	25.8	38.6	12.9	51.5	53.8	39.1	50.1
Finance and insurance	45.1	21.4	66.6	127.0	47.3	174.3	35.5	45.3	38.2
Property and business services	17.6	11.9	29.5	202.8	112.5	315.3	8.7	10.5	9.4
Government administration and defence	50.4	10.7	61.1	108.6	47.8	156.4	46.4	22.5	39.1
Education	139.3	47.8	187.0	233.8	147.0	380.9	59.6	32.5	49.1
Health and community services	110.3	76.9	187.3	275.0	280.3	555.2	40.1	27.4	33.7
Cultural and recreational services	9.3	7.4	16.7	35.8	43.1	78.9	25.9	17.2	21.2
Personal and other services	13.5	*2.9	16.4	68.6	44.5	113.1	19.7	*6.4	14.5
<i>Permanent or casual employee</i>									
Permanent	556.8	204.8	761.6	1,619.4	527.1	2,146.5	34.4	38.9	35.5
Casual	12.1	113.1	125.2	157.8	854.5	1,012.3	7.7	13.2	12.4
<i>Sector —</i>									
Public	299.4	106.0	405.4	537.7	267.8	805.6	55.7	39.6	50.3
Private	269.5	212.0	481.5	1,239.4	1,113.8	2,353.2	21.7	19.0	20.5
Total	568.9	318.0	886.8	1,777.2	1,381.6	3,158.8	32.0	23.0	28.1

**TABLE 2. SELECTED CHARACTERISTICS OF TRADE UNION MEMBERS AND FULL-TIME OR PART-TIME STATUS,
AUGUST 1996—continued**

	Trade union member			All employees(a)			Proportion of all employees who were trade union members		
	Full-time	Part-time	Total	Full-time	Part-time	Total	Full-time	Part-time	Total
PERSONS									
	— '000 —						— per cent —		
State or Territory of usual residence —									
New South Wales	607.9	123.9	731.9	1,790.2	593.4	2,383.6	34.0	20.9	30.7
Victoria	469.7	107.2	576.9	1,319.0	489.1	1,808.1	35.6	21.9	31.9
Queensland	316.6	78.8	395.4	914.9	343.8	1,258.7	34.6	22.9	31.4
South Australia	144.0	44.3	188.3	365.7	170.9	536.7	39.4	25.9	35.1
Western Australia	142.6	31.6	174.2	502.4	195.1	697.5	28.4	16.2	25.0
Tasmania	49.2	15.0	64.3	111.4	52.0	163.4	44.2	28.9	39.3
Northern Territory	15.3	*1.7	17.0	58.2	17.5	75.6	26.3	*9.6	22.5
Australian Capital Territory	37.7	8.5	46.3	100.8	37.7	138.5	37.4	22.7	33.4
Age group (years) —									
15-19	34.3	69.0	103.2	207.7	351.6	559.3	16.5	19.6	18.5
20-24	177.2	55.1	232.3	704.8	261.5	966.3	25.1	21.1	24.0
25-34	481.0	68.0	549.0	1,501.0	361.8	1,862.8	32.0	18.8	29.5
35-44	525.1	112.5	637.6	1,332.4	441.9	1,774.4	39.4	25.5	35.9
45-54	415.7	76.2	492.0	1,051.9	312.6	1,364.5	39.5	24.4	36.1
55-59	109.1	21.8	130.9	243.8	95.7	339.6	44.7	22.8	38.6
60-64	35.5	6.6	42.1	99.5	44.5	144.0	35.6	14.9	29.2
65 and over	5.3	*1.9	7.3	21.3	30.0	51.3	25.0	*6.4	14.1
Birthplace —									
Born in Australia	1,329.8	330.6	1,660.4	3,853.7	1,500.2	5,353.9	34.5	22.0	31.0
Born outside Australia	453.3	80.6	533.9	1,308.8	399.4	1,708.2	34.6	20.2	31.3
Born in main English speaking countries	179.2	37.5	216.6	564.4	192.1	756.5	31.7	19.5	28.6
Born in other countries	274.1	43.2	317.3	744.4	207.3	951.7	36.8	20.8	33.3
Type of standard employment benefit received —									
Superannuation	1,752.5	352.9	2,105.4	4,849.9	1,249.1	6,099.0	36.1	28.3	34.5
Holiday leave	1,709.2	226.8	1,935.9	4,550.1	587.0	5,137.1	37.6	38.6	37.7
Sick leave	1,705.2	229.1	1,934.2	4,536.0	587.8	5,123.8	37.6	39.0	37.8
Long-service leave	1,652.1	207.1	1,859.2	4,055.0	484.4	4,539.3	40.7	42.8	41.0
Industry —									
Agriculture, forestry and fishing	9.7	*0.8	10.5	118.0	40.7	158.7	8.2	*2.1	6.6
Mining	32.8	*0.3	33.0	81.9	*3.9	85.8	40.0	*7.1	38.5
Manufacturing	388.2	21.9	410.1	950.7	108.9	1,059.6	40.8	20.1	38.7
Electricity, gas and water supply	44.3	*0.8	45.1	65.4	*3.5	68.9	67.6	*23.9	65.4
Construction	106.1	*3.4	109.6	320.7	48.6	369.3	33.1	*7.1	29.7
Wholesale trade	58.8	6.4	65.2	379.4	62.6	442.0	15.5	10.3	14.8
Retail trade	97.5	134.6	232.1	529.9	500.5	1,030.4	18.4	26.9	22.5
Accommodation, cafes and restaurants	29.0	23.7	52.7	160.9	180.6	341.5	18.0	13.1	15.4
Transport and storage	145.0	10.6	155.5	279.4	44.4	323.7	51.9	23.8	48.0
Communication services	88.6	5.8	94.4	137.0	15.1	152.1	64.6	38.7	62.1
Finance and insurance	82.4	21.4	103.9	255.6	50.1	305.7	32.2	42.8	34.0
Property and business services	58.1	18.7	76.8	506.7	166.0	672.7	11.5	11.3	11.4
Government administration and defence	161.1	12.3	173.5	305.6	64.3	369.9	52.7	19.2	46.9
Education	233.2	53.8	287.0	398.1	177.4	575.5	58.6	30.3	49.9
Health and community services	161.1	81.4	242.5	408.5	308.3	716.8	39.4	26.4	33.8
Cultural and recreational services	24.3	11.1	35.4	87.5	67.2	154.7	27.8	16.5	22.9
Personal and other services	63.2	*3.8	67.0	177.2	57.7	234.9	35.6	6.6	28.5
Permanent or casual employee —									
Permanent	1,719.2	234.3	1,953.5	4,603.5	617.4	5,220.9	37.3	38.0	37.4
Casual	63.9	176.8	240.8	559.1	1,282.2	1,841.2	11.4	13.8	13.1
Sector —									
Public	767.5	116.1	883.6	1,267.8	327.0	1,594.8	60.5	35.5	55.4
Private	1,015.6	295.1	1,310.7	3,894.7	1,572.6	5,467.3	26.1	18.8	24.0
Total	1,783.1	411.2	2,194.3	5,162.6	1,899.6	7,062.1	34.5	21.6	31.1

(a) Includes 178,000 persons who did not know their membership status.

TABLE 3. TRADE UNION MEMBERSHIP AND INDUSTRY, AUGUST 1996
(^{'000})

Industry	Trade union member			Not a trade union member			Total(a)		
	Males	Females	Persons	Males	Females	Persons	Males	Females	Persons
AGRICULTURE, FORESTRY AND FISHING	8.6	*1.9	10.5	108.6	35.7	144.3	120.8	37.9	158.7
Agriculture	*3.8	*1.2	5.0	92.1	30.9	123.0	98.9	32.2	131.2
Services to agriculture	*2.5	*0.2	*2.7	8.5	*2.7	11.3	11.2	*2.9	14.1
Forestry and logging	*2.0	*0.5	*2.5	*4.3	*1.2	5.5	6.6	*1.9	8.6
Commercial fishing	*0.3	*0.0	*0.3	*3.6	*0.8	*4.5	*4.1	*0.8	4.9
MINING	32.3	*0.7	33.0	38.9	11.8	50.7	73.4	12.5	85.8
Coal mining	16.4	*0.3	16.7	*2.9	*0.0	*2.9	19.3	*0.3	19.6
Oil and gas extraction	*1.0	*0.0	*1.0	*1.2	*0.0	*1.2	*2.3	*0.0	*2.3
Metal ore mining	9.2	*0.3	9.5	21.2	7.2	28.5	31.2	7.5	38.7
Other mining	*3.6	*0.0	*3.6	*4.2	*0.7	5.0	8.3	*0.7	9.0
Services to mining	*2.1	*0.2	*2.3	9.4	*3.9	13.3	12.3	*4.0	16.3
MANUFACTURING	324.8	85.3	410.1	432.0	188.3	620.3	779.6	280.0	1,059.6
Food, beverages and tobacco manufacturing	68.5	24.2	92.7	50.0	30.2	80.2	122.6	55.6	178.2
Textiles, clothing, footwear and leather manufacturing	14.8	18.9	33.7	25.0	32.2	57.2	41.9	52.8	94.8
Wood and paper product manufacturing	18.6	*2.7	21.3	27.5	8.4	36.0	47.8	11.1	58.9
Printing, publishing and recorded media	17.4	9.3	26.7	46.5	34.9	81.4	66.2	45.8	111.9
Petroleum, coal, chemical and associated product manufacturing	31.3	5.0	36.3	37.5	18.7	56.2	71.0	24.4	95.5
Non-metallic mineral products manufacturing	20.8	*2.0	22.8	20.7	5.6	26.2	42.5	7.7	50.3
Metal products manufacturing	61.4	*2.9	64.3	85.2	13.7	98.9	150.3	16.9	167.2
Machinery and equipment manufacturing	80.4	17.9	98.3	105.0	34.3	139.3	190.1	53.1	243.1
Other manufacturing	11.7	*2.4	14.0	34.5	10.2	44.8	47.2	12.6	59.8
ELECTRICITY, GAS AND WATER SUPPLY	41.1	*4.0	45.1	16.6	6.5	23.0	58.5	10.4	68.9
Electricity and gas supply	29.6	*2.6	32.1	11.2	*4.2	15.4	41.5	6.8	48.3
Water supply, sewerage and drainage service	11.5	*1.4	13.0	5.4	*2.2	7.6	17.0	*3.7	20.6
CONSTRUCTION	106.7	*2.9	109.6	208.7	40.7	249.4	324.8	44.5	369.3
General construction	43.8	*2.9	46.7	77.1	18.4	95.4	124.0	21.9	146.0
Construction trade services	62.8	*0.0	62.8	131.6	22.3	153.9	200.7	22.6	223.3
WHOLESALE TRADE	52.4	12.9	65.2	241.1	121.9	363.0	304.2	137.8	442.0
Basic material wholesaling	17.1	*1.5	18.6	66.3	24.2	90.5	87.0	26.9	113.9
Machinery and motor vehicle wholesaling	19.0	*3.0	22.1	98.7	40.8	139.5	122.0	44.1	166.1
Personal and household good wholesaling	16.2	8.3	24.5	76.1	57.0	133.0	95.2	66.7	162.0
RETAIL TRADE	96.5	135.6	232.1	369.4	396.6	766.0	487.4	543.0	1,030.4
Food retailing	50.9	74.4	125.3	107.1	151.9	259.0	165.8	232.1	398.0
Personal and household good retailing	23.9	59.7	83.6	130.5	201.4	331.8	159.7	265.6	425.3
Motor vehicle retailing and services	21.8	*1.5	23.2	131.8	43.3	175.2	161.8	45.3	207.1
ACCOMMODATION, CAFES AND RESTAURANTS	24.2	28.5	52.7	118.6	160.6	279.2	148.9	192.6	341.5
TRANSPORT AND STORAGE	130.8	24.8	155.5	111.1	47.0	158.2	249.4	74.4	323.7
Road transport	43.4	*3.5	46.8	60.9	16.7	77.6	107.0	20.4	127.4
Rail transport	37.0	*4.2	41.2	*4.3	*1.6	5.9	42.4	6.1	48.5
Water transport	5.2	*0.4	5.6	*4.5	*0.7	5.2	10.3	*1.1	11.5
Air and space transport	21.9	11.2	33.1	10.2	5.7	15.9	32.4	17.6	50.0
Other transport	*1.2	*0.0	*1.2	*3.7	*0.5	*4.2	4.9	*0.5	5.4
Services to transport	15.0	*3.3	18.3	19.7	19.8	39.5	36.7	24.1	60.8
Storage	7.1	*2.2	9.3	7.9	*1.9	9.8	15.6	*4.5	20.1
COMMUNICATION SERVICES	68.6	25.8	94.4	29.4	24.8	54.2	100.6	51.5	152.1
FINANCE AND INSURANCE SERVICES	37.3	66.6	103.9	87.5	104.7	192.2	131.4	174.3	305.7
Finance	28.5	54.4	82.9	43.0	55.7	98.6	76.0	111.7	187.6
Insurance	6.1	9.1	15.3	18.0	22.4	40.3	25.8	32.6	58.4
Services to finance and insurance	*2.6	*3.0	5.7	26.6	26.7	53.3	29.6	30.0	59.6
PROPERTY AND BUSINESS SERVICES	47.3	29.5	76.8	300.7	280.6	581.3	357.4	315.3	672.7
Property services	5.0	*2.6	7.6	39.4	39.7	79.1	45.8	43.1	88.9
Business services	42.3	26.9	69.2	261.3	240.9	502.2	311.6	272.1	583.8

TABLE 3. TRADE UNION MEMBERSHIP AND INDUSTRY, AUGUST 1996
(^{'000})—continued

Industry	Trade union member			Not a trade union member			Total(a)		
	Males	Females	Persons	Males	Females	Persons	Males	Females	Persons
GOVERNMENT ADMINISTRATION AND DEFENCE	112.4	61.1	173.5	96.2	92.6	188.8	213.5	156.4	369.9
Government administration	106.3	58.7	165.0	88.0	88.7	176.7	198.9	149.9	348.8
Defence	6.0	*2.4	8.4	8.1	*3.9	12.0	14.5	6.5	21.0
EDUCATION	99.9	187.0	287.0	90.0	186.5	276.5	194.6	380.9	575.5
HEALTH AND COMMUNITY SERVICES	55.2	187.3	242.5	103.4	359.4	462.8	161.6	555.2	716.8
Health services	49.4	166.7	216.2	76.2	260.1	336.3	128.1	433.7	561.8
Community services	5.8	20.5	26.3	27.2	99.3	126.4	33.5	121.6	155.0
CULTURAL AND RECREATIONAL SERVICES	18.7	16.7	35.4	54.4	60.6	115.0	75.8	78.9	154.7
Motion picture, radio and television services	5.1	*3.7	8.9	11.6	11.1	22.7	18.0	16.2	34.2
Libraries, museums and the arts	5.9	4.6	10.5	8.7	11.8	20.5	15.4	16.3	31.8
Sports and recreation	7.7	8.4	16.0	34.2	37.7	71.9	42.4	46.4	88.8
PERSONAL AND OTHER SERVICES	50.6	16.4	67.0	69.8	95.0	164.9	121.7	113.1	234.9
Personal services	4.5	5.2	9.7	20.9	54.4	75.2	26.0	60.8	86.7
Other services	46.0	11.2	57.3	46.2	33.9	80.1	93.0	45.6	138.6
Private households employing staff	*0.0	*0.0	*0.0	*2.8	6.7	9.5	*2.8	6.7	9.5
Total	1,307.5	886.8	2,194.3	2,476.4	2,213.4	4,689.8	3,903.3	3,158.8	7,062.1

(a) Includes 178,000 persons who did not know their membership status.

**TABLE 4. TRADE UNION MEMBERSHIP, AGE AND WHETHER CHILDREN UNDER 15 PRESENT,
AUGUST 1996**

Age group (years)	With children under 15 present			Without children under 15 present			Total		
	Males	Females	Persons	Males	Females	Persons	Males	Females	Persons
TRADE UNION MEMBER									
	— '000 —								
15-19	*0.0	*0.5	*0.5	57.8	44.9	102.7	57.8	45.5	103.2
20-24	8.3	6.6	14.9	121.7	95.8	217.4	130.0	102.3	232.3
25-34	147.1	75.3	222.4	191.7	134.8	326.6	338.8	210.2	549.0
35-44	237.3	164.2	401.5	126.5	109.6	236.1	363.7	273.9	637.6
45-54	90.0	30.5	120.5	207.0	164.5	371.5	296.9	195.0	492.0
55-59	5.3	*0.7	6.0	76.7	48.2	124.9	82.0	48.9	130.9
60-64	*0.9	*0.0	*0.9	31.9	9.3	41.2	32.8	9.3	42.1
65 and over	*0.0	*0.0	*0.0	5.4	*1.8	7.3	5.4	*1.8	7.3
Total	488.8	277.9	766.7	818.6	609.0	1,427.6	1,307.5	886.8	2,194.3
NOT A TRADE UNION MEMBER									
	— '000 —								
15-19	*0.7	*1.9	*2.6	213.1	219.8	432.9	213.8	221.7	435.5
20-24	19.1	22.6	41.7	331.4	318.4	649.8	350.4	341.0	691.4
25-34	232.6	231.7	464.3	451.7	349.0	800.7	684.3	580.7	1,265.0
35-44	370.6	330.7	701.3	202.6	202.4	405.0	573.1	533.2	1,106.3
45-54	129.4	78.7	208.0	312.6	325.7	638.3	442.0	404.4	846.3
55-59	7.1	*0.5	7.6	111.5	84.7	196.2	118.5	85.2	203.8
60-64	*1.3	*0.3	*1.6	63.2	33.8	96.9	64.4	34.1	98.5
65 and over	*1.0	*0.0	*1.0	28.9	13.2	42.0	29.8	13.2	43.0
Total	761.5	666.4	1,427.9	1,714.9	1,547.0	3,261.8	2,476.4	2,213.4	4,689.8
TOTAL(a)									
	— '000 —								
15-19	*0.7	*2.4	*3.1	282.2	274.0	556.2	282.8	276.4	559.3
20-24	28.9	29.3	58.2	479.3	428.8	908.1	508.2	458.1	966.3
25-34	390.7	310.1	700.7	665.3	496.7	1,162.0	1,056.0	806.8	1,862.8
35-44	622.8	500.0	1,122.8	336.2	315.4	651.5	959.0	815.4	1,774.4
45-54	223.1	109.6	332.7	533.3	498.6	1,031.9	756.4	608.2	1,364.5
55-59	13.2	*1.2	14.4	191.8	133.4	325.1	204.9	134.6	339.6
60-64	*2.1	*0.3	*2.4	97.7	43.9	141.6	99.8	44.2	144.0
65 and over	*1.0	*0.0	*1.0	35.1	15.2	50.3	36.1	15.2	51.3
Total	1,282.5	952.8	2,235.3	2,620.9	2,205.9	4,826.8	3,903.3	3,158.8	7,062.1
PROPORTION WHO WERE TRADE UNION MEMBERS									
	per cent								
15-19	*0.0	*21.9	*17.0	20.5	16.4	18.5	20.4	16.4	18.5
20-24	28.7	22.4	25.5	25.4	22.3	23.9	25.6	22.3	24.0
25-34	37.7	24.3	31.7	28.8	27.1	28.1	32.1	26.0	29.5
35-44	38.1	32.9	35.8	37.6	34.8	36.2	37.9	33.6	35.9
45-54	40.3	27.8	36.2	38.8	33.0	36.0	39.3	32.1	36.1
55-59	40.3	*57.8	41.8	40.0	36.1	38.4	40.0	36.3	38.6
60-64	*40.8	*0.0	*35.7	32.7	21.2	29.1	32.8	21.1	29.2
65 and over	*0.0	*0.0	*0.0	15.4	*12.1	14.4	15.0	*12.1	14.1
Total	38.1	29.2	34.3	31.2	27.6	29.6	33.5	28.1	31.1

(a) Includes 178,000 persons who did not know their membership status.

**TABLE 5. TRADE UNION MEMBERSHIP, INDUSTRY AND WHETHER PERMANENT OR CASUAL EMPLOYEE,
AUGUST 1996**

Industry	Males			Females			Persons		
	Permanent	Casual	Total	Permanent	Casual	Total	Permanent	Casual	Total
TRADE UNION MEMBER									
	— '000 —								
Agriculture, forestry and fishing	5.9	*2.8	8.6	*1.2	*0.7	*1.9	7.1	*3.4	10.5
Mining	31.3	*1.1	32.3	*0.7	*0.0	*0.7	31.9	*1.1	33.0
Manufacturing	306.5	18.4	324.8	73.6	11.7	85.3	380.1	30.1	410.1
Electricity, gas and water supply	40.5	*0.7	41.1	*3.6	*0.3	*4.0	44.1	*1.0	45.1
Construction	91.2	15.4	106.7	*2.4	*0.5	*2.9	93.7	15.9	109.6
Wholesale trade	49.3	*3.1	52.4	8.8	*4.0	12.9	58.1	7.1	65.2
Retail trade	63.8	32.7	96.5	83.0	52.6	135.6	146.8	85.3	232.1
Accommodation, cafes and restaurants	15.4	8.8	24.2	15.7	12.9	28.5	31.1	21.6	52.7
Transport and storage	118.8	12.0	130.8	22.6	*2.2	24.8	141.4	14.1	155.5
Communication services	67.5	*1.1	68.6	25.5	*0.3	25.8	93.0	*1.4	94.4
Finance and insurance	37.0	*0.3	37.3	65.3	*1.2	66.6	102.3	*1.5	103.9
Property and business services	40.3	7.0	47.3	24.7	4.8	29.5	65.0	11.8	76.8
Government administration and defence	111.2	*1.1	112.4	58.1	*3.0	61.1	169.3	*4.1	173.5
Education	97.0	*2.9	99.9	174.8	12.3	187.0	271.8	15.2	287.0
Health and community services	52.3	*3.0	55.2	174.8	12.4	187.3	227.1	15.4	242.5
Cultural and recreational services	15.0	*3.7	18.7	10.9	5.8	16.7	25.9	9.5	35.4
Personal and other services	49.0	*1.6	50.6	15.7	*0.7	16.4	64.8	*2.2	67.0
Total	1,191.9	115.5	1,307.5	761.6	125.2	886.8	1,953.5	240.8	2,194.3
NOT A TRADE UNION MEMBER									
	— '000 —								
Agriculture, forestry and fishing	54.2	54.5	108.6	10.3	25.3	35.7	64.5	79.8	144.3
Mining	32.6	6.3	38.9	9.6	*2.1	11.8	42.2	8.5	50.7
Manufacturing	361.6	70.3	432.0	133.6	54.7	188.3	495.3	125.0	620.3
Electricity, gas and water supply	14.8	*1.8	16.6	5.4	*1.1	6.5	20.1	*2.9	23.0
Construction	117.8	90.9	208.7	22.1	18.6	40.7	139.9	109.5	249.4
Wholesale trade	206.6	34.4	241.1	89.2	32.7	121.9	295.8	67.2	363.0
Retail trade	239.7	129.7	369.4	164.1	232.5	396.6	403.8	362.2	766.0
Accommodation, cafes and restaurants	62.7	55.9	118.6	51.2	109.4	160.6	113.9	165.3	279.2
Transport and storage	76.3	34.8	111.1	35.3	11.8	47.0	111.6	46.6	158.2
Communication services	23.6	5.8	29.4	19.2	5.6	24.8	42.8	11.4	54.2
Finance and insurance	76.3	11.3	87.5	94.3	10.4	104.7	170.6	21.7	192.2
Property and business services	208.5	92.2	300.7	188.7	91.9	280.6	397.2	184.0	581.3
Government administration and defence	79.6	16.6	96.2	62.9	29.7	92.6	142.5	46.3	188.8
Education	71.4	18.6	90.0	125.7	60.8	186.5	197.1	79.4	276.5
Health and community services	78.3	25.1	103.4	249.3	110.1	359.4	327.6	135.2	462.8
Cultural and recreational services	28.5	25.9	54.4	24.7	35.9	60.6	53.3	61.8	115.0
Personal and other services	53.2	16.6	69.8	56.6	38.5	95.0	109.8	55.1	164.9
Total	1,785.7	690.7	2,476.4	1,342.3	871.1	2,213.4	3,128.0	1,561.8	4,689.8
TOTAL(a)									
	— '000 —								
Agriculture, forestry and fishing	61.4	59.4	120.8	11.8	26.1	37.9	73.1	85.6	158.7
Mining	65.4	7.9	73.4	10.3	*2.1	12.5	75.8	10.0	85.8
Manufacturing	687.7	91.9	779.6	212.5	67.5	280.0	900.2	159.4	1,059.6
Electricity, gas and water supply	55.6	*2.9	58.5	9.0	*1.4	10.4	64.6	*4.4	68.9
Construction	216.8	107.9	324.8	25.2	19.3	44.5	242.0	127.2	369.3
Wholesale trade	266.3	37.9	304.2	99.8	38.0	137.8	366.2	75.8	442.0
Retail trade	318.9	168.5	487.4	254.3	288.7	543.0	573.2	457.2	1,030.4
Accommodation, cafes and restaurants	82.1	66.8	148.9	68.1	124.5	192.6	150.3	191.2	341.5
Transport and storage	200.4	48.9	249.4	60.4	13.9	74.4	260.8	62.9	323.7
Communication services	93.7	6.9	100.6	45.6	5.9	51.5	139.3	12.8	152.1
Finance and insurance	119.5	11.9	131.4	162.4	11.9	174.3	281.9	23.8	305.7
Property and business services	256.7	100.7	357.4	217.4	97.9	315.3	474.1	198.6	672.7
Government administration and defence	195.8	17.7	213.5	122.9	33.5	156.4	318.7	51.2	369.9
Education	172.5	22.1	194.6	305.7	75.2	380.9	478.2	97.3	575.5
Health and community services	132.7	28.8	161.6	430.3	124.9	555.2	563.0	153.8	716.8
Cultural and recreational services	45.6	30.2	75.8	36.9	42.1	78.9	82.5	72.2	154.7
Personal and other services	103.3	18.5	121.7	73.8	39.3	113.1	177.1	57.8	234.9
Total	3,074.4	828.9	3,903.3	2,146.5	1,012.3	3,158.8	5,220.9	1,841.2	7,062.1

**TABLE 5. TRADE UNION MEMBERSHIP, INDUSTRY AND WHETHER PERMANENT OR CASUAL EMPLOYEE,
AUGUST 1996—continued**

Industry	Males			Females			Persons		
	Permanent	Casual	Total	Permanent	Casual	Total	Permanent	Casual	Total
PROPORTION WHO WERE TRADE UNION MEMBERS									
	— per cent —								
Agriculture, forestry and fishing	9.6	*4.6	7.1	*10.3	*2.6	*5.0	9.7	*4.0	6.6
Mining	47.8	*13.8	44.1	*6.6	11.1	*5.5	42.2	*10.8	38.5
Manufacturing	44.6	20.0	41.7	34.7	17.3	30.5	42.2	18.8	38.7
Electricity, gas and water supply	72.8	*22.9	70.3	40.5	*22.8	38.0	68.3	*22.9	65.4
Construction	42.1	14.3	32.8	*9.7	*2.5	*6.5	38.7	12.5	29.7
Wholesale trade	18.5	*8.1	17.2	8.8	10.7	9.3	15.9	9.4	14.8
Retail trade	20.0	19.4	19.8	32.6	18.2	25.0	25.6	18.7	22.5
Accommodation, cafes and restaurants	18.8	13.1	16.3	23.0	10.3	14.8	20.7	11.3	15.4
Transport and storage	59.3	24.4	52.4	37.4	*15.5	33.3	54.2	22.5	48.0
Communication services	72.0	*15.9	68.2	56.0	*4.4	50.1	66.8	*10.6	62.1
Finance and insurance	30.9	*2.7	28.4	40.2	*10.2	38.2	36.3	*6.5	34.0
Property and business services	15.7	7.0	13.2	11.4	4.9	9.4	13.7	6.0	11.4
Government administration and defence	56.8	*6.4	52.6	47.3	*8.9	39.1	53.1	8.1	46.9
Education	56.2	*13.2	51.3	57.2	16.3	49.1	56.8	15.6	49.9
Health and community services	39.4	*10.3	34.2	40.6	10.0	33.7	40.3	10.0	33.8
Cultural and recreational services	32.8	12.3	24.6	29.5	13.8	21.2	31.4	13.2	22.9
Personal and other services	47.5	*8.5	41.6	21.3	*1.7	14.5	36.6	*3.9	28.5
Total	38.8	13.9	33.5	35.5	12.4	28.1	37.4	13.1	31.1

(a) Includes 178 000 persons who did not know their membership status.

**TABLE 6. TRADE UNION MEMBERSHIP, OCCUPATION AND WHETHER
A PERMANENT OR CASUAL EMPLOYEE, AUGUST 1996**

Occupation	Males			Females			Persons		
	Permanent	Casual	Total	Permanent	Casual	Total	Permanent	Casual	Total
TRADE UNION MEMBER									
	— '000 —								
Managers and administrators	40.6	*2.2	42.7	17.5	*0.3	17.8	58.1	*2.4	60.5
Professionals	160.9	6.6	167.5	252.7	16.5	269.2	413.6	23.1	436.7
Associate professionals	114.4	*3.2	117.6	51.6	*3.6	55.1	166.0	6.7	172.7
Tradespersons and related workers	298.7	26.7	325.4	14.2	*1.4	15.6	312.9	28.1	341.0
Advanced clerical and service workers	9.7	*0.0	9.7	28.5	*3.2	31.7	38.2	*3.2	41.4
Intermediate clerical, sales and service workers	108.3	9.7	118.1	204.1	22.6	226.7	312.5	32.3	344.8
Intermediate production and transport workers	264.2	32.8	296.9	32.0	6.5	38.6	296.2	39.3	335.5
Elementary clerical, sales and service workers	55.6	16.2	71.8	90.2	51.8	142.0	145.8	68.0	213.8
Labourers and related workers	139.5	18.2	157.8	70.8	19.3	90.1	210.3	37.6	247.9
Total	1,191.9	115.5	1,307.5	761.6	125.2	886.8	1,953.5	240.8	2,194.3
NOT A TRADE UNION MEMBER									
	— '000 —								
Managers and administrators	213.5	41.9	255.4	44.6	11.6	56.2	258.1	53.4	311.6
Professionals	345.2	79.6	424.8	268.3	89.4	357.7	613.6	169.0	782.5
Associate professionals	258.6	58.9	317.5	135.9	43.5	179.4	394.5	102.3	496.8
Tradespersons and related workers	349.1	109.3	458.4	38.2	21.5	59.7	387.3	130.8	518.1
Advanced clerical and service workers	17.4	*3.3	20.7	191.8	73.1	264.9	209.2	76.4	285.6
Intermediate clerical, sales and service workers	198.0	55.6	253.7	434.6	239.8	674.3	632.6	295.4	928.0
Intermediate production and transport workers	180.8	96.3	277.1	29.4	26.1	55.5	210.2	122.5	332.6
Elementary clerical, sales and service workers	90.3	95.2	185.5	131.3	242.6	373.8	221.6	337.8	559.4
Labourers and related workers	132.8	150.7	283.4	68.2	123.6	191.8	201.0	274.3	475.3
Total	1,785.7	690.7	2,476.4	1,342.3	871.1	2,213.4	3,128.0	1,561.8	4,689.8
TOTAL(a)									
	— '000 —								
Managers and administrators	259.6	45.1	304.7	63.3	11.8	75.1	323.0	56.9	379.9
Professionals	520.0	88.0	608.0	531.6	107.7	639.3	1,051.6	195.7	1,247.3
Associate professionals	382.3	63.1	445.4	191.2	47.5	238.7	573.5	110.6	684.1
Tradespersons and related workers	672.1	140.9	813.0	53.4	22.9	76.3	725.6	163.8	889.3
Advanced clerical and service workers	27.6	*3.3	30.9	223.4	76.3	299.8	251.0	79.7	330.7
Intermediate clerical, sales and service workers	316.4	67.8	384.2	650.8	268.7	919.5	967.3	336.5	1,303.7
Intermediate production and transport workers	459.6	133.2	592.8	62.0	33.0	95.0	521.6	166.2	687.8
Elementary clerical, sales and service workers	152.6	114.0	266.6	228.9	298.7	527.6	381.5	412.7	794.3
Labourers and related workers	284.1	173.5	457.6	141.8	145.6	287.4	425.9	319.2	745.1
Total	3,074.4	828.9	3,903.3	2,146.5	1,012.3	3,158.8	5,220.9	1,841.2	7,062.1
PROPORTION WHO WERE TRADE UNION MEMBERS									
	— per cent —								
Managers and administrators	15.6	*4.8	14.0	27.7	*2.2	23.7	18.0	*4.2	15.9
Professionals	30.9	7.5	27.5	47.5	15.3	42.1	39.3	11.8	35.0
Associate professionals	29.9	*5.0	26.4	27.0	7.5	23.1	28.9	6.1	25.2
Tradespersons and related workers	44.4	19.0	40.0	26.6	*6.1	20.5	43.1	17.2	38.3
Advanced clerical and service workers	35.2	*0.0	31.4	12.7	*4.2	10.6	15.2	*4.1	12.5
Intermediate clerical, sales and service workers	34.2	14.3	30.7	31.4	8.4	24.7	32.3	9.6	26.4
Intermediate production and transport workers	57.5	24.6	50.1	51.7	19.7	40.6	56.8	23.6	48.8
Elementary clerical, sales and service workers	36.5	14.2	26.9	39.4	17.4	26.9	38.2	16.5	26.9
Labourers and related workers	49.1	10.5	34.5	50.0	13.3	31.4	49.4	11.8	33.3
Total	38.8	13.9	33.5	35.5	12.4	28.1	37.4	13.1	31.1

(a) Includes 178,000 persons who did not know their membership status.

TABLE 7. SELECTED CHARACTERISTICS OF EMPLOYEES AND STANDARD BENEFITS RECEIVED.
AUGUST 1996

	No standard benefit received	Type of standard benefit received				Total	Proportion receiving a benefit
		Super-annuation	Holiday leave	Sick leave	Long-service leave		
MALES							
				— '000 —			%
<i>Age group (years) —</i>							
15-19	105.8	160.1	121.3	122.8	96.6	282.8	62.6
20-24	49.8	438.0	363.5	364.8	299.0	508.2	90.2
25-34	65.5	957.7	869.1	864.5	765.4	1,056.0	93.8
35-44	50.0	886.9	801.1	799.4	723.7	959.0	94.8
45-54	40.4	704.4	624.7	623.7	569.2	756.4	94.7
55-59	15.9	185.2	158.4	156.8	143.5	204.9	92.2
60-64	12.3	83.9	73.4	72.4	66.6	99.8	87.7
65 and over	14.3	19.2	14.6	12.2	11.5	36.1	60.4
<i>Birthplace —</i>							
Born in Australia	269.9	2,543.4	2,234.0	2,228.2	2,002.9	2,896.7	90.7
Born outside Australia	84.2	892.1	792.2	788.4	672.6	1,006.7	91.6
Main English speaking countries	29.7	390.6	341.5	340.5	295.4	434.2	93.2
Other countries	54.5	501.5	450.7	447.9	377.2	572.5	90.5
<i>Full-time or part-time status —</i>							
Full-time	128.5	3,163.5	2,945.4	2,935.7	2,616.6	3,385.4	96.2
Part-time	225.6	272.0	80.8	80.9	58.9	518.0	56.4
<i>Permanent or casual employee —</i>							
Permanent	..	2,963.6	3,026.2	3,016.6	2,647.9	3,074.4	100.0
Casual	354.1	471.8	27.6	828.9	57.3
<i>Sector —</i>							
Public	22.9	752.3	725.2	731.1	701.2	789.2	97.1
Private	331.1	2,683.2	2,301.0	2,285.6	1,974.4	3,114.1	89.4
<i>Industry —</i>							
Agriculture, forestry and fishing	22.8	91.0	58.9	58.4	36.9	120.8	81.2
Mining	*2.4	70.1	65.3	64.6	61.4	73.4	96.7
Manufacturing	32.0	731.5	680.5	677.2	617.1	779.6	95.9
Electricity, gas and water supply	*0.0	57.7	55.6	55.5	54.8	58.5	100.0
Construction	47.2	263.9	211.1	212.9	187.1	324.8	85.5
Wholesale trade	14.2	285.5	263.2	260.1	232.7	304.2	95.3
Retail trade	90.8	378.0	312.7	312.1	247.3	487.4	81.4
Accommodation, cafes and restaurants	26.6	114.5	78.6	78.7	64.1	148.9	82.2
Transport and storage	20.3	226.3	199.0	196.8	180.0	249.4	91.9
Communication services	*3.5	96.5	93.5	93.3	90.0	100.6	96.5
Finance and insurance	*3.8	125.0	118.3	119.0	115.5	131.4	97.1
Property and business services	37.4	308.2	251.6	249.3	201.7	357.4	89.5
Government administration and defence	8.4	200.7	192.6	195.6	186.7	213.5	96.0
Education	10.2	178.1	169.4	169.0	155.6	194.6	94.8
Health and community services	8.8	143.3	129.6	128.5	113.3	161.6	94.5
Cultural and recreational services	15.6	57.4	44.4	44.4	36.5	75.8	79.4
Personal and other services	10.1	107.8	102.0	101.2	94.9	121.7	91.7
<i>Occupation --</i>							
Managers and administrators	15.3	281.9	257.3	253.5	223.4	304.7	95.0
Professionals	26.7	567.8	512.1	510.7	462.6	608.0	95.6
Associate professionals	22.0	411.8	377.1	378.6	340.1	445.4	95.1
Tradespersons and related workers	51.3	735.3	662.2	662.3	583.6	813.0	93.7
Advanced clerical and service workers	*0.8	29.9	27.4	25.9	25.7	30.9	97.3
Intermediate clerical, sales and service workers	24.7	351.2	311.6	310.6	284.1	384.2	93.6
Intermediate production and transport workers	61.8	517.7	454.4	451.0	401.9	592.8	89.6
Elementary clerical, sales and service workers	59.1	199.5	150.0	149.6	130.4	266.6	77.8
Labourers and related workers	92.3	340.4	274.1	274.3	223.8	457.6	79.8
Total	354.1	3,435.4	3,026.2	3,016.6	2,675.5	3,903.3	90.9

**TABLE 7. SELECTED CHARACTERISTICS OF EMPLOYEES AND STANDARD BENEFITS RECEIVED,
AUGUST 1996—continued**

	No standard benefit received	Type of standard benefit received				Total	Proportion receiving a benefit
		Super- annuation	Holiday leave	Sick leave	Long- service leave		
FEMALES							
				--- '000 ---			%
<i>Age group (years) —</i>							
15-19	136.6	127.2	82.1	81.2	60.3	276.4	50.6
20-24	51.9	388.9	314.0	312.3	263.1	458.1	88.7
25-34	66.1	720.9	603.7	603.3	534.0	806.8	91.8
35-44	67.0	725.9	564.6	564.7	505.0	815.4	91.8
45-54	51.0	545.7	429.3	427.2	393.5	608.2	91.6
55-59	16.6	115.3	89.6	89.3	83.1	134.6	87.6
60-64	9.9	33.8	24.1	25.1	21.6	44.2	77.6
65 and over	8.8	5.8	*3.6	*4.0	*3.2	15.2	42.1
<i>Birthplace</i>							
Born in Australia	322.9	2,071.8	1,623.6	1,620.9	1,451.9	2,457.2	86.9
Born outside Australia	85.1	591.8	487.2	486.2	411.9	701.6	87.9
Main English speaking countries	36.1	277.5	219.0	217.8	186.2	322.3	88.8
Other countries	48.9	314.3	268.3	268.4	225.8	379.3	87.1
<i>Full-time or part-time status —</i>							
Full-time	40.2	1,686.5	1,604.7	1,600.3	1,438.3	1,777.2	97.7
Part-time	367.7	977.1	506.2	506.9	425.4	1,381.6	73.4
<i>Permanent or casual employee —</i>							
Permanent	..	2,061.5	2,110.9	2,107.1	1,824.0	2,146.5	100.0
Casual	407.9	602.1	39.8	1,012.3	59.7
<i>Sector</i>							
Public	41.9	744.2	669.2	675.1	644.0	805.6	94.8
Private	366.0	1,919.4	1,441.7	1,432.0	1,219.8	2,353.2	84.4
<i>Industry</i>							
Agriculture, forestry and fishing	10.3	25.0	11.3	10.5	7.2	37.9	72.9
Mining	*0.0	12.3	10.3	10.3	10.0	12.5	100.0
Manufacturing	23.3	247.4	209.9	207.7	187.3	280.0	91.7
Electricity, gas and water supply	*0.0	10.4	8.7	9.0	8.8	10.4	100.0
Construction	8.1	33.7	25.0	24.0	16.9	44.5	81.8
Wholesale trade	9.3	125.3	98.0	97.7	83.8	137.8	93.2
Retail trade	146.2	380.8	250.8	247.3	194.3	543.0	73.1
Accommodation, cafes and restaurants	41.2	147.7	65.0	66.7	54.0	192.6	78.6
Transport and storage	4.6	67.9	60.0	60.4	54.6	74.4	93.8
Communication services	*2.1	48.3	45.0	45.3	43.9	51.5	95.9
Finance and insurance	*4.1	167.8	161.6	161.5	154.6	174.3	97.7
Property and business services	38.6	268.8	214.6	214.4	174.3	315.3	87.8
Government administration and defence	13.1	141.1	122.8	121.8	118.3	156.4	91.6
Education	29.9	340.0	293.9	300.4	277.6	380.9	92.2
Health and community services	34.9	504.0	424.9	422.6	389.1	555.2	93.7
Cultural and recreational services	17.9	58.8	36.1	35.9	33.2	78.9	77.3
Personal and other services	24.3	84.3	72.9	71.5	55.8	113.1	78.5
<i>Occupation</i>							
Managers and administrators	*4.5	67.9	62.4	62.1	53.6	75.1	94.0
Professionals	38.3	586.7	520.4	525.6	478.1	639.3	94.0
Associate professionals	10.5	223.1	188.5	186.8	168.2	238.7	95.6
Tradespersons and related workers	8.2	64.3	52.2	51.8	38.7	76.3	89.3
Advanced clerical and service workers	19.9	270.5	220.7	220.5	191.5	299.8	93.4
Intermediate clerical, sales and service workers	96.0	802.2	641.3	640.7	582.6	919.5	89.6
Intermediate production and transport workers	17.2	75.4	60.8	61.3	52.2	95.0	81.9
Elementary clerical, sales and service workers	151.3	359.5	224.7	222.3	184.0	527.6	71.3
Labourers and related workers	62.0	213.9	139.9	136.1	114.9	287.4	78.4
<i>Total</i>	407.9	2,663.5	2,110.9	2,107.1	1,863.8	3,158.8	87.1

**TABLE 7. SELECTED CHARACTERISTICS OF EMPLOYEES AND STANDARD BENEFITS RECEIVED,
AUGUST 1996 - continued**

	No standard benefit received	Type of standard benefit received				Total	Proportion receiving a benefit
		Super- annuation	Holiday leave	Sick leave	Long- service leave		
PERSONS							
				— '000 —			%
<i>Age group (years) —</i>							
15-19	242.4	287.3	203.4	204.0	156.9	559.3	56.7
20-24	101.7	826.9	677.5	677.1	562.1	966.3	89.5
25-34	131.5	1,678.6	1,472.8	1,467.8	1,299.4	1,862.8	92.9
35-44	117.0	1,612.9	1,365.7	1,364.1	1,228.7	1,774.4	93.4
45-54	91.5	1,250.1	1,053.9	1,050.9	962.7	1,364.5	93.3
55-59	32.6	300.5	248.0	246.1	226.6	339.6	90.4
60-64	22.2	117.7	97.5	97.5	88.2	144.0	84.6
65 and over	23.1	25.0	18.3	16.2	14.7	51.3	55.0
<i>Birthplace —</i>							
Born in Australia	592.8	4,615.1	3,857.7	3,849.2	3,454.8	5,353.9	88.9
Born outside Australia	169.2	1,483.8	1,279.4	1,274.6	1,084.5	1,708.2	90.1
Main English speaking countries	65.9	668.1	560.5	558.3	481.5	756.5	91.3
Other countries	103.4	815.7	719.0	716.3	603.0	951.7	89.1
<i>Full-time or part-time status</i>							
Full-time	168.7	4,849.9	4,550.1	4,536.0	4,055.0	5,162.6	96.7
Part-time	593.3	1,249.1	587.0	587.8	484.4	1,899.6	68.8
<i>Permanent or casual employee —</i>							
Permanent	..	5,025.1	5,137.1	5,123.8	4,471.9	5,220.9	100.0
Casual	762.0	1,073.9	67.4	1,841.2	58.6
<i>Sector —</i>							
Public	64.8	1,496.4	1,394.4	1,406.2	1,345.2	1,594.8	95.9
Private	697.2	4,602.6	3,742.7	3,717.6	3,194.1	5,467.3	87.2
<i>Industry —</i>							
Agriculture, forestry and fishing	33.0	116.0	70.2	68.8	44.1	158.7	79.2
Mining	*2.4	82.4	75.6	74.9	71.3	85.8	97.2
Manufacturing	55.4	978.9	890.3	884.9	804.4	1,059.6	94.8
Electricity, gas and water supply	*0.0	68.0	64.3	64.5	63.6	68.9	100.0
Construction	55.3	297.6	236.1	236.9	204.0	369.3	85.0
Wholesale trade	23.5	410.8	361.3	357.9	316.5	442.0	94.7
Retail trade	237.0	758.8	563.5	559.5	441.6	1,030.4	77.0
Accommodation, cafes and restaurants	67.8	262.1	143.6	145.4	118.1	341.5	80.2
Transport and storage	24.9	294.1	259.0	257.2	234.7	323.7	92.3
Communication services	5.6	144.9	138.4	138.6	133.9	152.1	96.3
Finance and insurance	7.9	292.8	279.9	280.6	270.1	305.7	97.4
Property and business services	75.9	577.0	466.2	463.7	376.0	672.7	88.7
Government administration and defence	21.6	341.8	315.5	317.3	305.0	369.9	94.2
Education	40.0	518.2	463.3	469.5	433.3	575.5	93.0
Health and community services	43.7	647.3	554.5	551.1	502.4	716.8	93.9
Cultural and recreational services	33.6	116.2	80.5	80.3	69.7	154.7	78.3
Personal and other services	34.4	192.1	174.9	172.7	150.7	234.9	85.3
<i>Occupation —</i>							
Managers and administrators	19.8	349.8	319.7	315.6	277.0	379.9	94.8
Professionals	65.0	1,154.5	1,032.6	1,036.3	940.6	1,247.3	94.8
Associate professionals	32.6	634.9	565.6	565.3	508.3	684.1	95.2
Tradespersons and related workers	59.5	799.6	714.4	714.1	622.2	889.3	93.3
Advanced clerical and service workers	20.7	300.4	248.1	246.4	217.1	330.7	93.7
Intermediate clerical, sales and service workers	120.7	1,153.5	952.9	951.3	866.7	1,303.7	90.7
Intermediate production and transport workers	79.0	593.2	515.2	512.2	454.1	687.8	88.5
Elementary clerical, sales and service workers	210.4	559.0	374.7	371.9	314.4	794.3	73.5
Labourers and related workers	154.3	554.3	414.0	410.5	338.7	745.1	79.3
Total	762.0	6,099.0	5,137.1	5,123.8	4,539.3	7,062.1	89.2

**TABLE 8. SELECTED CHARACTERISTICS OF EMPLOYEES, SUPERANNUATION COVERAGE
AND FULL-TIME OR PART-TIME STATUS, AUGUST 1996**
(^{'000})

	<i>Full-time</i>			<i>Part-time</i>			<i>Total</i>		
	<i>Males</i>	<i>Females</i>	<i>Persons</i>	<i>Males</i>	<i>Females</i>	<i>Persons</i>	<i>Males</i>	<i>Females</i>	<i>Persons</i>
COVERED BY CURRENT EMPLOYER									
<i>Age group (years) —</i>									
15-19	113.9	65.0	178.9	46.3	62.2	108.4	160.1	127.2	287.3
20-24	372.2	287.6	659.8	65.8	101.2	167.1	438.0	388.9	826.9
25-34	902.8	508.8	1,411.6	54.8	212.1	267.0	957.7	720.9	1,678.6
35-44	850.3	408.7	1,259.0	36.6	317.2	353.9	886.9	725.9	1,612.9
45-54	670.5	332.1	1,002.6	33.9	213.6	247.5	704.4	545.7	1,250.1
55-59	167.0	64.6	231.6	18.2	50.7	68.8	185.2	115.3	300.5
60-64	74.3	17.6	91.9	9.6	16.2	25.8	83.9	33.8	117.7
65 and over	12.4	*2.0	14.3	6.8	*3.9	10.6	19.2	5.8	25.0
<i>Sector —</i>									
Public	715.5	520.7	1,236.1	36.8	223.5	260.3	752.3	744.2	1,496.4
Private	2,448.0	1,165.8	3,613.8	235.2	753.6	988.8	2,683.2	1,919.4	4,602.6
<i>Industry</i>									
Agriculture, forestry and fishing	79.1	16.8	95.8	11.9	8.3	20.2	91.0	25.0	116.0
Mining	68.7	10.1	78.8	*1.4	*2.2	*3.5	70.1	12.3	82.4
Manufacturing	704.9	201.9	906.8	26.6	45.5	72.1	731.5	247.4	978.9
Electricity, gas and water supply	57.1	7.8	64.9	*0.6	*2.6	*3.1	57.7	10.4	68.0
Construction	253.9	21.8	275.7	10.0	12.0	21.9	263.9	33.7	297.6
Wholesale trade	274.0	91.8	365.8	11.5	33.5	44.9	285.5	125.3	410.8
Retail trade	308.8	180.6	489.4	69.2	200.1	269.4	378.0	380.8	758.8
Accommodation, cafes and restaurants	84.5	61.5	146.1	29.9	86.1	116.1	114.5	147.7	262.1
Transport and storage	211.4	51.1	262.5	14.8	16.8	31.6	226.3	67.9	294.1
Communication services	95.6	37.4	133.1	*0.9	10.9	11.8	96.5	48.3	144.9
Finance and insurance	123.1	125.6	248.7	*1.9	42.2	44.1	125.0	167.8	292.8
Property and business services	277.5	192.1	469.6	30.7	76.7	107.4	308.2	268.8	577.0
Government administration and defence	191.7	106.8	298.6	8.9	34.3	43.2	200.7	141.1	341.8
Education	159.2	224.9	384.1	18.9	115.1	134.0	178.1	340.0	518.2
Health and community services	124.0	261.5	385.5	19.3	242.5	261.8	143.3	504.0	647.3
Cultural and recreational services	47.0	33.2	80.2	10.4	25.6	36.0	57.4	58.8	116.2
Personal and other services	102.8	61.5	164.3	5.0	22.8	27.8	107.8	84.3	192.1
<i>Total</i>	<i>3,163.5</i>	<i>1,686.5</i>	<i>4,849.9</i>	<i>272.0</i>	<i>977.1</i>	<i>1,249.1</i>	<i>3,435.4</i>	<i>2,663.5</i>	<i>6,099.0</i>
COVERED BY OTHER THAN CURRENT EMPLOYER									
<i>Age group (years) —</i>									
15-19	*0.8	*0.2	*1.0	*1.1	*4.2	5.3	*1.9	*4.5	6.3
20-24	4.9	*2.1	7.0	6.5	*3.1	9.6	11.4	5.2	16.7
25-34	21.8	5.7	27.5	9.1	8.2	17.3	30.9	13.9	44.8
35-44	23.0	5.1	28.0	6.0	10.8	16.8	29.0	15.8	44.8
45-54	14.2	5.3	19.5	5.4	9.2	14.6	19.7	14.5	34.1
55-59	*3.2	*0.2	*3.3	*3.6	*2.9	6.5	6.7	*3.1	9.8
60-64	*1.8	*0.3	*2.1	*1.7	*0.6	*2.3	*3.6	*0.9	*4.5
65 and over	*0.9	*0.0	*0.9	*1.2	*0.3	*1.4	*2.1	*0.3	*2.3
<i>Sector —</i>									
Public	5.2	4.8	10.0	5.5	8.5	14.0	10.7	13.3	24.1
Private	65.4	14.0	79.4	29.1	30.8	59.9	94.5	44.8	139.3
<i>Industry —</i>									
Agriculture, forestry and fishing	*4.1	*0.9	4.9	*2.2	*1.3	*3.5	6.3	*2.1	8.4
Mining	*0.9	*0.0	*0.9	*0.4	*0.0	*0.4	*1.2	*0.0	*1.2
Manufacturing	9.2	*1.3	10.5	*2.1	*2.7	4.7	11.3	*3.9	15.3
Electricity, gas and water supply	*0.2	*0.1	*0.3	*0.0	*0.0	*0.0	*0.2	*0.1	*0.3
Construction	14.2	*0.5	14.6	6.8	*1.4	8.2	21.0	*1.9	22.8
Wholesale trade	*3.8	*1.1	4.9	*1.7	*0.6	*2.3	5.5	*1.7	7.3
Retail trade	7.6	*2.1	9.7	6.0	8.6	14.6	13.6	10.7	24.3
Accommodation, cafes and restaurants	*2.7	*1.1	*3.8	*2.8	*2.7	5.5	5.5	*3.8	9.3
Transport and storage	5.0	*0.4	5.5	*1.0	*0.5	*1.5	6.0	*1.0	7.0
Communication services	*1.0	*0.1	*1.1	*0.3	*0.0	*0.3	*1.3	*0.1	*1.4
Finance and insurance	*2.5	*0.0	*2.5	*0.0	*0.1	*0.1	*2.5	*0.1	*2.6
Property and business services	10.8	*4.0	14.7	*2.6	*3.7	6.4	13.4	7.7	21.1
Government administration and defence	*1.8	*0.6	*2.4	*2.3	*1.6	*3.9	*4.2	*2.2	6.3
Education	*2.1	*2.6	4.7	*2.3	6.4	8.8	*4.4	9.0	13.5
Health and community services	*1.6	*2.6	*4.2	*1.2	5.4	6.6	*2.7	8.0	10.8
Cultural and recreational services	*1.9	*0.4	*2.3	*2.4	*2.0	*4.4	*4.3	*2.4	6.7
Personal and other services	*1.2	*1.2	*2.3	*0.6	*2.2	*2.8	*1.7	*3.4	5.1
<i>Total</i>	<i>70.6</i>	<i>18.9</i>	<i>89.4</i>	<i>34.6</i>	<i>39.3</i>	<i>73.9</i>	<i>105.2</i>	<i>58.1</i>	<i>163.4</i>

**TABLE 8. SELECTED CHARACTERISTICS OF EMPLOYEES, SUPERANNUATION COVERAGE
AND FULL-TIME OR PART-TIME STATUS, AUGUST 1996**
(*000)—continued

	Full-time			Part-time			Total		
	Males	Females	Persons	Males	Females	Persons	Males	Females	Persons
NOT COVERED									
<i>Age group (years) —</i>									
15-19	18.8	9.0	27.8	102.0	135.8	237.8	120.8	144.8	265.6
20-24	23.6	14.3	37.9	35.1	49.7	84.8	58.7	64.0	122.7
25-34	44.5	17.4	61.9	23.0	54.5	77.5	67.5	71.9	139.4
35-44	29.0	16.4	45.4	14.1	57.2	71.3	43.1	73.6	116.7
45-54	18.8	11.0	29.8	13.6	37.0	50.5	32.3	48.0	80.3
55-59	7.5	*1.4	8.9	5.6	14.9	20.4	13.0	16.3	29.3
60-64	4.5	*1.0	5.5	7.8	8.5	16.3	12.3	9.5	21.8
65 and over	4.7	*1.3	6.1	10.2	7.7	17.9	14.9	9.1	24.0
<i>Sector —</i>									
Public	9.4	12.2	21.7	16.8	35.8	52.7	26.3	48.1	74.3
Private	141.9	59.6	201.5	194.5	329.4	523.9	336.4	389.0	725.4
<i>Industry —</i>									
Agriculture, forestry and fishing	13.7	*3.6	17.2	9.8	7.2	17.0	23.5	10.7	34.3
Mining	*2.0	*0.2	*2.2	*0.0	*0.0	*0.0	*2.0	*0.2	*2.2
Manufacturing	22.4	11.0	33.4	14.4	17.6	32.0	36.8	28.6	65.5
Electricity, gas and water supply	*0.3	*0.0	*0.3	*0.4	*0.0	*0.4	*0.6	*0.0	*0.6
Construction	27.4	*2.9	30.3	12.5	6.0	18.5	39.9	8.9	48.8
Wholesale trade	5.4	*3.2	8.6	7.8	7.6	15.3	13.2	10.8	24.0
Retail trade	19.4	11.3	30.7	76.3	140.2	216.6	95.7	151.5	247.2
Accommodation, cafes and restaurants	9.2	*1.9	11.1	19.7	39.2	59.0	28.9	41.2	70.1
Transport and storage	9.5	*1.9	11.4	7.6	*3.6	11.3	17.1	5.5	22.7
Communication services	*1.8	*1.1	*2.8	*0.9	*2.0	*3.0	*2.7	*3.1	5.8
Finance and insurance	*3.1	*1.4	*4.4	*0.8	5.0	5.8	*3.8	6.4	10.3
Property and business services	15.7	6.7	22.4	20.1	32.0	52.2	35.8	38.8	74.6
Government administration and defence	*3.5	*1.2	4.6	5.1	12.0	17.1	8.6	13.1	21.7
Education	*2.9	6.4	9.3	9.2	25.4	34.6	12.0	31.8	43.9
Health and community services	7.9	10.9	18.8	7.6	32.3	39.9	15.5	43.2	58.7
Cultural and recreational services	*2.8	*2.2	5.0	11.3	15.5	26.8	14.1	17.7	31.8
Personal and other services	4.6	5.9	10.5	7.6	19.5	27.1	12.2	25.4	37.7
Total	151.4	71.9	223.2	211.3	365.2	576.6	362.7	437.1	799.8
TOTAL									
<i>Age group (years) —</i>									
15-19	133.5	74.2	207.7	149.4	202.2	351.6	282.8	276.4	559.3
20-24	400.7	304.1	704.8	107.5	154.0	261.5	508.2	458.1	966.3
25-34	969.0	532.0	1,501.0	87.0	274.8	361.8	1,056.0	806.8	1,862.8
35-44	902.3	430.1	1,332.4	56.7	385.2	441.9	959.0	815.4	1,774.4
45-54	703.5	348.4	1,051.9	52.8	259.8	312.6	756.4	608.2	1,364.5
55-59	177.6	66.2	243.8	27.3	68.4	95.7	204.9	134.6	339.6
60-64	80.7	18.9	99.5	19.2	25.3	44.5	99.8	44.2	144.0
65 and over	18.0	*3.3	21.3	18.1	11.9	30.0	36.1	15.2	51.3
<i>Sector —</i>									
Public	730.1	537.7	1,267.8	59.1	267.8	327.0	789.2	805.6	1,594.8
Private	2,655.3	1,239.4	3,894.7	458.8	1,113.8	1,572.6	3,114.1	2,353.2	5,467.3
<i>Industry —</i>									
Agriculture, forestry and fishing	96.8	21.2	118.0	24.0	16.7	40.7	120.8	37.9	158.7
Mining	71.6	10.3	81.9	*1.7	*2.2	*3.9	73.4	12.5	85.8
Manufacturing	736.5	214.2	950.7	43.1	65.7	108.9	779.6	280.0	1,059.6
Electricity, gas and water supply	57.6	7.9	65.4	*0.9	*2.6	*3.5	58.5	10.4	68.9
Construction	295.5	25.2	320.7	29.3	19.3	48.6	324.8	44.5	369.3
Wholesale trade	283.2	96.2	379.4	21.0	41.6	62.6	304.2	137.8	442.0
Retail trade	335.8	194.1	529.9	151.6	349.0	500.5	487.4	543.0	1,030.4
Accommodation, cafes and restaurants	96.4	64.5	160.9	52.5	128.1	180.6	148.9	192.6	341.5
Transport and storage	225.9	53.5	279.4	23.4	20.9	44.4	249.4	74.4	323.7
Communication services	98.4	38.6	137.0	*2.2	12.9	15.1	100.6	51.5	152.1
Finance and insurance	128.6	127.0	255.6	*2.7	47.3	50.1	131.4	174.3	305.7
Property and business services	303.9	202.8	506.7	53.5	112.5	166.0	357.4	315.3	672.7
Government administration and defence	197.1	108.6	305.6	16.4	47.8	64.3	213.5	156.4	369.9
Education	164.3	233.8	398.1	30.4	147.0	177.4	194.6	380.9	575.5
Health and community services	133.5	275.0	408.5	28.0	280.3	308.3	161.6	555.2	716.8
Cultural and recreational services	51.7	35.8	87.5	24.1	43.1	67.2	75.8	78.9	154.7
Personal and other services	108.6	68.6	177.2	13.2	44.5	57.7	121.7	113.1	234.9
Total	3,385.4	1,777.2	5,162.6	518.0	1,381.6	1,899.6	3,903.3	3,158.8	7,062.1

EXPLANATORY NOTES

INTRODUCTION

1 This survey was conducted as a supplement to the monthly Labour Force Survey. Respondents to the Labour Force Survey who fell within the scope of the supplementary survey were asked further questions.

2 For further information about the monthly Labour Force Survey, see *Labour Force, Australia* (6203.0). This monthly publication contains information about survey design, sample redesign, scope, coverage and population benchmarks relevant to the monthly Labour Force Survey, which also apply to supplementary surveys. It also contains definitions of demographic and labour force characteristics, and information about telephone interviewing relevant to both the monthly Labour Force Survey and supplementary surveys.

3 In addition to information about trade union membership, this publication also presents information about standard employment benefits, collected as part of the Trade Union Members survey.

SCOPE

4 In addition to those already excluded from the monthly Labour Force Survey, students at boarding schools, patients in hospitals, residents of homes (e.g. retirement homes, homes for the handicapped), and inmates of prisons are further excluded from all supplementary surveys.

5 For this survey employees aged 15 years or more were included unless they worked solely for payment in kind in their main job.

RELIABILITY OF THE ESTIMATES

6 Estimates in this publication are subject to sampling and non-sampling errors.

- Sampling error is the difference between the published estimate and the value that would have been produced if all dwellings had been included in the survey. For further information on sampling error, refer to the Technical Notes on page 28.
- Non-sampling errors are inaccuracies that occur because of imperfections in reporting by respondents and interviewers and errors made in coding and processing data. These inaccuracies may occur in any enumeration, whether it be a full count or a sample. Every effort is made to reduce the non-sampling error to a minimum by careful design of questionnaires, intensive training and supervision of interviewers and efficient processing procedures.

SEASONAL FACTORS

7 The estimates refer to information collected in the survey month and, due to seasonal factors, may not be representative of other months of the year.

CHANGES IN CLASSIFICATIONS

8 From August 1996, occupation data are classified according to the second edition of the Australian Standard Classification of Occupations (ASCO). For more detailed information see *ASCO — Australian Standard Classification of Occupations, Information Paper* (1221.0). A

concordance between the new and the old versions of ASCO is not yet available.

CHANGES THIS SURVEY

9 The following data items relating to trade union membership are not available in this issue:

- hours worked in main job;
- hours worked in second job;
- hours paid for in main job;
- weekly earnings in main job (\$);
- weekly earnings in second job (\$);
- weekly earnings in all jobs (\$);
- frequency of pay in main job; and
- size of location in main job.

COMPARABILITY OF TIME SERIES

10 Revisions are made to population benchmarks for the Labour Force Survey after each five-yearly Census of Population and Housing. The last such revision was made in February 1994 to take account of the results of the 1991 Census of Population and Housing. Estimates from supplementary surveys conducted after February 1994 are therefore based on revised population benchmarks.

11 Until July 1994, supplementary surveys were conducted in all dwellings selected in the Labour Force Survey. Since August 1994 the sample for supplementary surveys has been restricted to seven-eighths of the Labour Force Survey sample. This reduction in sample size means that the standard errors for this survey differ from those applicable to previous surveys.

12 In August 1990, persons aged 70 years and over were excluded from this supplementary survey, restricting the age of respondents to 15–69 years.

COMPARABILITY WITH MONTHLY LABOUR FORCE SURVEY STATISTICS

13 Due to differences in the scope and sample size of this supplementary survey and that of the monthly Labour Force Survey, the estimation procedure may lead to some small variations between labour force estimates from this survey and those from the Labour Force Survey.

COMPARABILITY WITH OTHER TRADE UNION STATISTICS

14 Statistics on trade union membership are also obtained from censuses of trade unions and employee associations (published in *Trade Union Statistics, Australia* (6323.0)). Those estimates are higher than estimates obtained from this survey for a number of reasons, including the following:

- estimates from this survey relate only to trade union membership in the respondents main job; a person who was a trade union member only by virtue of holding a second job was excluded;
- these estimates relate only to trade union membership in one job, whereas a person who had recently changed jobs could be registered as a member of more than one union in the trade union collection;
- these estimates relate only to persons who were employees in their main job in the reference week; other persons (e.g. unemployed and those not in the labour force) are excluded even though they may have retained union membership in respect of some earlier employment;
- some persons may elect to belong to more than one union, but would be counted only once in this survey; and
- some unions may encounter difficulties in maintaining up-to-date registers of members, which will therefore include persons who are no longer financial members.

PREVIOUS SURVEYS

15 Trade union membership was first collected in 1982, then in the current format biennially from 1986 to 1990 and annually from 1992 (with limited data available every second year). Results of previous surveys have been published in:

- *Labour Force, Australia, December 1994, December 1995* (6203.0)
- *Trade Union Members, Australia, August 1986, August 1988, August 1990, August 1992* (6325.0)
- *Trade Union Members, Australia, August 1994* (6325.0.40.001)

16 Limited data on trade union membership have also been published in:

- *Weekly Earnings of Employees (Distribution), August 1995* (6310.0.40.001)
- *Working Arrangements, Australia, August 1993* (6342.0)
- *Working Arrangements, Australia, August 1995* (6342.0.40.001)

17 Results of previous surveys on employment benefits have been published in:

- *Employment Benefits, Australia, August 1984 to August 1992* (6334.0)
- *Employment Benefits, Australia, August 1994* (6334.0.40.001)
- *Weekly Earnings of Employees (Distribution), Australia, August 1995* (6310.0.40.001)

NEXT SURVEY

18 The ABS plans to conduct this survey again in August 1997.

RELATED PUBLICATIONS

19 Other publications which may be of interest include:

- *Career Experience, Australia* (6254.0.40.001)
- *Employment Benefits, Australia* (6334.0.40.001)
- *Industrial Disputes, Australia* (6322.0)
- *Labour Force, Australia* (6203.0)
- *Trade Union Statistics, Australia* (6323.0)
- *Weekly Earnings of Employees (Distribution), Australia* (6310.0.40.001)
- *Working Arrangements, Australia* (6342.0.40.001)

20 Current publications produced by the ABS are listed in the *Catalogue of Publications and Products* (1101.0). The ABS also issues, on Tuesdays and Fridays, a *Release Advice* (1105.0) which lists publications to be released in the next few days. The Catalogue and Release Advice are available from any ABS office.

TECHNICAL NOTES

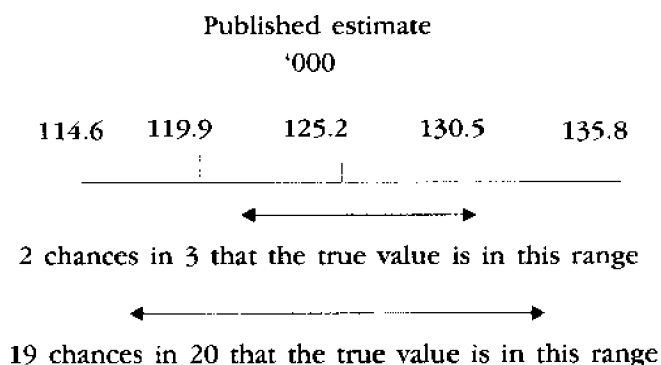
INTRODUCTION

Since the estimates in this publication are based on information obtained from occupants of a sample of dwellings, they are subject to sampling variability, that is, they may differ from those estimates that would have been produced if all dwellings had been included in the survey. One measure of the likely difference is given by the *standard error*, which indicates the extent to which an estimate might have varied by chance because only a sample of dwellings was included. There are about two chances in three that a sample estimate will differ by less than one standard error from the number that would have been obtained if all dwellings had been included, and about 19 chances in 20 that the difference will be less than two standard errors. Another measure of the likely difference is the *relative standard error*, which is obtained by expressing the standard error as a percentage of the estimate.

Space does not allow for the separate indication of the standard errors of all estimates in this publication. A table of standard errors for general application is given on page 30. Since they are averages based on calculations for a limited number of past surveys over a wide range of labour force characteristics, these figures will not give a precise measure of the standard error of a particular estimate but they will provide an indication of its magnitude.

CALCULATION OF STANDARD ERROR

An example of the calculation and the use of standard errors in relation to estimates of persons is as follows. Table 6 shows the estimated number of female trade union members who were casual employees was 125,200 in August 1996. Since this estimate is between 100,000 and 200,000 the table of standard errors shows that the standard error for Australia will be between 4,900 and 6,600 and can be approximated by interpolation as 5,300 (rounded to the nearest 100). Therefore, there are about two chances in three that the value that would have been produced if all dwellings had been included in the survey will fall within the range 119,900 to 130,500 and about 19 chances in 20 that the value will fall within the range 114,600 to 135,800. This example is illustrated in the following diagram:



As can be seen from the standard error table, *the smaller the estimate the higher the relative standard error*. Very small estimates are thus subject to such high standard errors (relative to the size of the estimate) as to detract seriously from their value for most reasonable uses. In these tables only estimates with relative standard errors of 25% or less (and percentages based on such estimates) are considered sufficiently reliable for most purposes. However, estimates and percentages with larger relative standard errors have been included, and are preceded by an asterisk (e.g. *3.4) to indicate they are subject to high standard errors and should be used with caution.

PROPORTIONS AND PERCENTAGES

Proportions and percentages formed from the ratio of two estimates are also subject to sampling error. The size of the error depends on the accuracy of both the numerator and the denominator. A formula to approximate the relative standard error (RSE) of a proportion is:

$$RSE(x/y) = \sqrt{[RSE(x)]^2 + [RSE(y)]^2}$$

Considering the example from the paragraph 'Calculation of Standard Error', 125,200 females represent 14.1% of the 886,800 females working in August 1996. The standard error of 886,800 is approximately 11,900, so the relative standard error is 1.3%. The relative standard error for 125,200 is 4.2%. Applying the above formula, the relative standard error of the proportion is $\sqrt{(4.2)^2 + (1.3)^2}$ or 4.0%, giving a standard error for the proportion (14.1%) of 0.6 percentage points. Therefore, there are about two chances in three that the proportion of female trade union members who were casual employees is between 13.5% and 14.7% and 19 chances in 20 the proportion is within the range 12.9% to 15.3%.

SAMPLING ERROR

Published estimates may also be used to calculate the difference between two survey estimates (of numbers or percentages). Such an estimate is also subject to sampling error. The sampling error of the difference between two estimates depends on their standard errors and the relationship (correlation) between them. An approximate standard error (SE) of the difference between two estimates (x-y) may be calculated by the following formula:

$$SE(x-y) = \sqrt{[SE(x)]^2 + [SE(y)]^2}$$

While this formula will only be exact for differences between separate and uncorrelated characteristics or subpopulations it is expected to provide a good approximation for all differences likely to be of interest in these tables.

NON-SAMPLING ERROR

The imprecision due to sampling variability, which is measured by the standard error, should not be confused with inaccuracies that may occur because of imperfections in reporting by interviewers and respondents and errors made in coding and processing data. Inaccuracies of this kind are referred to as the non-sampling error, and they may occur in any enumeration, whether it be a full count or a sample. Every effort is made to reduce non-sampling errors to a minimum by careful design of questionnaires, intensive training and supervision of interviewers and efficient operating procedures.

STANDARD ERRORS OF ESTIMATES

Size of estimate	NSW	Vic.	Qld	SA	WA	Tas.	NT	ACT	Aust.	
									Relative standard error	
Persons	no.	no.	no.	no.	no.	no.	no.	no.	no.	%
100	100	120	90
200	220	200	220	140	160	120	200	100.0
300	340	310	280	240	270	170	190	150	260	86.7
500	440	410	360	310	350	230	240	190	340	68.0
700	520	480	430	370	410	270	280	220	420	60.0
1 000	630	580	510	440	480	320	330	260	510	51.0
1 500	770	710	620	530	580	380	390	310	630	42.0
2 000	880	820	720	610	670	430	450	350	740	37.0
2 500	1 000	900	800	650	750	450	500	390	850	34.0
3 000	1 050	1 000	850	750	800	500	540	420	900	30.0
3 500	1 150	1 100	950	800	850	550	580	450	1 000	28.6
4 000	1 250	1 150	1 000	850	900	600	620	470	1 050	26.3
5 000	1 350	1 300	1 100	900	1 000	650	700	500	1 200	24.0
7 000	1 600	1 500	1 300	1 050	1 150	700	800	600	1 400	20.0
10 000	1 900	1 750	1 500	1 250	1 350	800	950	700	1 700	17.0
20 000	2 550	2 400	2 050	1 700	1 850	1 050	1 300	900	2 350	11.8
50 000	3 750	3 500	3 000	2 450	2 650	1 400	2 000	1 300	3 600	7.2
100 000	5 000	4 700	4 000	3 200	3 500	1 650	2 750	1 650	4 900	4.9
200 000	6 600	6 200	5 250	4 100	4 550	1 950	3 850	2 100	6 600	3.3
300 000	7 700	7 200	6 100	4 750	5 300	2 150	..	2 400	7 850	2.6
500 000	9 300	8 700	7 400	5 700	6 400	2 400	9 650	1.9
1 000 000	11 900	11 100	9 450	7 150	8 150	12 600	1.3
2 000 000	15 150	14 050	12 000	8 950	10 350	16 300	0.8
5 000 000	20 400	18 800	16 200	22 500	0.5
10 000 000	28 300	0.3

DATA ITEMS AVAILABLE FROM THIS SURVEY

The ABS offers a range of unpublished data from this survey upon request.

This section specifies the data items, categories and populations which relate to the survey. More detailed breakdowns of some data items are available on request.

The population(s) for a particular data item refers to the persons in the survey to whom the data item relates.

Refer to the Glossary in this publication and *Labour Force, Australia* (6203.0) for definitions of data items.

POPULATIONS

POPULATION 1: Employees in main job

POPULATION 2: Employees in main job who were members of a trade union

POPULATION 3: Employees in main job who were covered by superannuation

DATA ITEM	POPULATIONS	DATA ITEM	POPULATIONS
1 STATE OF USUAL RESIDENCE	ALL	6A RELATIONSHIP IN HOUSEHOLD (1)	ALL
New South Wales		Family member	
Victoria		Husband or wife	
Queensland		With dependants	
South Australia		Without dependants	
Western Australia		Lone parent	
Tasmania		With dependants	
Northern Territory		Without dependants	
Australian Capital Territory		Dependent student	
2 AREA OF USUAL RESIDENCE	ALL	Non-dependent child	
Capital City		Other family person	
Balance of State or Territory		Non-family member	
3 REGION OF USUAL RESIDENCE	ALL	Lone person	
Standard labour force dissemination regions		Not living alone	
4 SEX	ALL	Family status not determined	
Males		6B RELATIONSHIP IN HOUSEHOLD (2)	ALL
Females		Family member	
5 MARITAL STATUS	ALL	Husband or wife	
Married		With children under 15	
Not-married		Without children under 15	
		Lone parent	
		With children under 15	
		With dependent students but without children under 15	
		Without dependants	
		Dependent student	
		Non-dependent child	
		Other family person	
		Non-family member	
		Lone person	
		Not living alone	
		Family status not determined	

DATA ITEM	POPULATIONS	DATA ITEM	POPULATIONS
7A BIRTHPLACE AND PERIOD OF ARRIVAL Born in Australia Born outside Australia Arrived before 1961 Arrived 1961-1970 Arrived 1971-1980 Arrived 1981-1990 Arrived 1991 to survey date	ALL	11 OCCUPATION Managers and administrators Professionals Associate professionals Tradespersons and related workers Advanced clerical and service workers Intermediate clerical, sales and service workers Intermediate production and transport workers Elementary clerical, sales and service workers Labourers and related workers	ALL
7B BIRTHPLACE (1) Born in Australia Born outside Australia Born in main English speaking countries Born in other countries	ALL	Note: Data available at Unit Group (4-digit) level.	
7C BIRTHPLACE (2) Born in Australia Born outside Australia Oceania New Zealand Europe and the former USSR Germany Greece Italy Netherlands United Kingdom and Ireland Former Yugoslav Republics The Middle East and North Africa Lebanon Southeast Asia Malaysia Philippines Viet Nam Northeast Asia China The Americas Other India	ALL	12 INDUSTRY Agriculture, forestry and fishing Mining Manufacturing Electricity, gas and water supply Construction Wholesale trade Retail trade Accommodation, cafes and restaurants Transport and storage Communication services Finance and insurance Property and business services Government administration and defence Education Health and community services Cultural and recreational services Personal and other services	ALL
		Note: Data available at Unit Group (3-digit) level.	
8 AGE 15-19 20-24 25-34 35-44 45-54 55-59 60-64 65 and over	ALL	13 HOURS WORKED IN ALL JOBS 0 or less than 1 hour 1-14 15-19 20-24 25-29 30-34 35 36-39 40 41-44 45-48 49 hours or more	ALL
9 FULL-TIME OR PART-TIME STATUS IN MAIN JOB Full-time Part-time	ALL	14 SECTOR OF MAIN JOB Public Private Don't know	ALL
10 FULL-TIME OR PART-TIME WORKER IN MAIN JOB Full-time worker Part-time worker	ALL	15 PERMANENT OR CASUAL EMPLOYEE IN MAIN JOB Permanent Casual	ALL
		16 NUMBER OF STANDARD BENEFITS No standard benefits One or more standard benefits One standard benefit Two standard benefits Three standard benefits Four standard benefits	ALL

DATA ITEM	POPULATIONS
17 TYPE OF STANDARD BENEFIT RECEIVED	ALL
No standard benefit received	
Superannuation	
Holiday leave	
Sick leave	
Long service leave	
18 SUPERANNUATION COVERAGE	ALL
Covered	
Not Covered	
19 SOURCE OF SUPERANNUATION COVERAGE	ALL
Current employer	
Other source	
Not covered	
20 TRADE UNION MEMBERSHIP	ALL
Member of a trade union	
Not a member of a trade union	
Membership status not known	

DATA ITEM	POPULATIONS
21 SCHOOL ATTENDANCE	ALL
Attending school	
Not attending school	
22 PROVISION OF PAID SICK LEAVE	ALL
Paid sick leave	
No paid sick leave	
Don't know	
23 PROVISION OF PAID HOLIDAY LEAVE	ALL
Paid holiday leave	
No paid holiday leave	
Don't know	
24 PROVISION OF LONG SERVICE LEAVE	ALL
Long-service leave	
No long service leave	
Don't know	

HOW TO ORDER SPECIAL TABLES FROM THIS SURVEY

WHAT INFORMATION IS AVAILABLE ? See the list of data items and survey populations on pages 31–33. Data items from this list may be cross-classified to produce tables to your specifications.

COST The cost of special data tables is available on request, but will depend on the number of data items, and their degree of detail.

METHOD OF PAYMENT Payment can be made by credit card or on receiving our invoice (the invoiced cost is payable in full within 28 days of supply).

AVAILABLE ON PAPER OR FLOPPY DISK Special data tables can be made available as printed tables or on floppy disk in a variety of formats to suit specific software packages.

FOR MORE INFORMATION

Contact Michael Jones Telephone: (06) 252 6503
Facsimile: (06) 252 7784

or write to Assistant Director
Labour Force Supplementary Surveys
Australlian Bureau of Statistics
PO Box 10
BELCONNEN ACT 2616

SUPPLEMENTARY SURVEYS

The supplementary and special surveys collect data on particular aspects of the labour force. The following is an historical list of supplementary and special labour force surveys. The data are available in publication form, by subscription or on request. It may be possible to order unpublished data on the following supplementary and special surveys by contacting the ABS.

<i>Title of survey</i>	<i>Product no.</i>
Alternative Working Arrangements, Irregular. Latest issue September to November 1986	6341.0
Annual and Long Service Leave Taken, Irregular. Latest issue May 1988 to April 1989	6317.0
Career Experience, Irregular. First and latest issue February 1993	6254.0
Career Paths of Persons with Trade Qualifications, Irregular. Latest issue 1993	6243.0
Career Paths of Qualified Nurses, Irregular. Latest issue March to July 1989	6277.0
Child Care, Irregular. Latest issue June 1993	4402.0
Employment Benefits, Irregular. Latest issue August 1994	6334.0.40.001
Income and Housing Costs and Amenities, Persons with Earned Income, Final issue 1990	6546.0
Job Search Experience of Unemployed Persons, Annual. Latest issue July 1996	6222.0
Labour Force Experience, Two-yearly. Latest issue February 1995	6206.0.40.001
Labour Force Status and Educational Attainment, Final issue February 1994	6235.0
Labour Force Status and Other Characteristics of Families, Annual. Latest issue June 1995	6224.0.40.001
Labour Force Status and other Characteristics of Migrants, Irregular. Latest issue September 1993	6250.0
Labour Mobility, Two-yearly. Latest issue February 1996	6209.0
Multiple Jobholding, Irregular. Latest issue August 1994	6216.0.04.001
Participation in Education, Annual. Latest issue September 1995	6272.0
Persons Employed at Home, Irregular. Latest issue September 1995	6275.0
Persons Not in the Labour Force, Annual. Latest issue September 1995	6220.0.40.001
Persons Who Had Re-entered the Labour Force, Irregular. Latest issue July 1995	6264.0.40.001
Persons Who Have Left the Labour Force, Irregular. Latest issue September 1994	6267.0.40.001
Retirement and Retirement Intentions, Three-yearly. Latest issue November 1994	6238.0.40.001
Successful and Unsuccessful Job Search Experience, Two-yearly. Latest issue July 1996	6245.0
Superannuation, Irregular. Latest issue November 1995	6319.0
Trade Union Members, Two-yearly. Latest issue August 1994	6325.0.40.001
Training and Education Experience, Irregular. Latest issue 1993	6278.0
Transition From Education to Work, Annual. Irregular. Latest issue May 1995	6227.0.40.001
Underemployed Workers, Annual. Latest issue September 1995	6265.0.40.001
Weekly Earnings of Employees (Distribution), Annual. Latest issue August 1995	6310.0.40.001
Working Arrangements, Irregular. Latest issue August 1995	6342.0.40.001

SUPPLEMENTARY SURVEY PROGRAM FOR 1997

<i>Topic</i>	<i>Survey month</i>	<i>Release</i>
Persons Not in The Labour Force	September 1996	February 1997
Underemployed Workers	September 1996	March 1997
Career Experience	November 1996	May 1997
Labour Force Status of Migrants	November 1996	May 1997

INQUIRIES

Central Office: (06) 252 6504

Regional Offices:

SYDNEY	(02) 9268 4212	ADELAIDE	(08) 8237 7365
MELBOURNE	(03) 9615 7677	HOBART	(03) 6220 5841
BRISBANE	(07) 3222 6068	DARWIN	(08) 8943 2150
PERTH	(09) 360 5943	CANBERRA	(06) 207 0283

GLOSSARY

Casual employees	Employees who were not entitled to either annual leave or sick leave in their main job.
Employees	Employed persons aged 15 years and over who worked for an employer for wages or salary or in their own business, either with or without employees, if that business was a limited liability company.
Full-time employees in main job	All employees for whom 'full-time' was the response to the question 'Is your main job full-time or part-time?'.
Holiday leave	Provision by employers of paid holiday leave in the main job, as collected by responses to the question 'Does your employer provide you with paid holiday leave?'.
Industry	Classified using the <i>Australian and New Zealand Standard Industrial Classification (ANZSIC) 1993</i> (1292.0). In this publication, industry relates to the main job and is shown at the ANZSIC Division or Subdivision level. Unpublished industry data at the ANZSIC Group level are also available.
Long-service leave	Provision by employers or industries of long-service leave to any employee in the main job, as collected by responses to the question 'Does your employer or industry provide long-service leave?'. Persons who 'did not know' whether they were provided with long-service leave were considered to be not in receipt of this benefit.
Main English-speaking countries	Comprises the United Kingdom, Ireland, Canada, South Africa, the United States of America and New Zealand.
Main job	The job in which most hours were usually worked.
Occupation	Unless otherwise specified, all occurrences of occupation in this publication relate to Major Group as defined by the <i>ASCO — Australian Standard Classification of Occupations Information Paper</i> (1221.0).
Part-time employees in main job	All employees for whom 'part-time' was the response to the question 'Is your main job full-time or part-time?'.
Permanent employee	Employees who were entitled to annual leave or sick leave in their main job.
Sector of main job	Is used to classify a respondent's employer as a public or private enterprise. Public sector includes local government authorities, government departments, agencies and authorities created by, or reporting to, the Commonwealth Parliament and State Parliaments. In August 1996, there were 37,900 persons for whom sector could not be determined. These persons were included in private sector for the purpose of this publication.

Sick leave	Provision by employers of paid sick leave in the main job, as collected by responses to the question 'Does your employer provide you with paid sick leave?'.
Standard benefit	Provision by employer of holiday leave, sick leave, long-service leave or superannuation benefit in the main job.
Superannuation benefit	Membership of a superannuation or retirement benefits scheme in relation to the main job, but only if the scheme was arranged or provided by the person's current employer even if the employer did not contribute to the fund.
Superannuation coverage	Membership of a superannuation or retirement benefits scheme. (In August 1996, there were 163,400 employees covered by schemes not arranged or provided by their employers, and hence not considered to have received a superannuation benefit).
Trade union	An organisation (or employee or professional association), consisting predominantly of employees, the principal activities of which include the negotiation or rates of pay and conditions of employment for its members.

For more information . . .

The ABS publishes a wide range of statistics and other information on Australia's economic and social conditions. Details of what is available in various publications and other products can be found in the ABS Catalogue of Publications and Products available from all ABS Offices.

ABS Products and Services

Many standard products are available from ABS bookshops located in each State and Territory. In addition to these products, information tailored to the needs of clients can be obtained on a wide range of media by contacting your nearest ABS Office. The ABS also provides a Subscription Service for standard products and some tailored information services.

National Dial-a-Statistic Line

0055 86 400

Steadycom P/L: premium rate 25c/20 secs.

This number gives 24-hour access, 365 days a year, for a range of important economic statistics including the CPI.

Internet

<http://www.abs.gov.au>

A wide range of ABS information is available via the Internet, with basic statistics available for each State, Territory and Australia. We also have Key National Indicators, ABS product release details and other information of general interest.

Sales and Inquiries

Keylink STAT.INFO/ABS
X.400 (C:Australia,PUB:Telememo,O:ABS, FN:STAT,SN:INFO)
Internet stat.info@abs.telememo.au

National Mail Order Service (06) 252 5249
Subscription Service 1800 02 0608

	Information Inquiries	Bookshop Sales
SYDNEY	(02) 9268 4611	(02) 9268 4620
MELBOURNE	(03) 9615 7755	(03) 9615 7755
BRISBANE	(07) 3222 6351	(07) 3222 6350
PERTH	(09) 360 5140	(09) 360 5307
ADELAIDE	(08) 8237 7100	(08) 8237 7582
CANBERRA	(06) 252 6627	(06) 207 0326
HOBART	(03) 6220 5800	(03) 6220 5800
DARWIN	(08) 8943 2111	(08) 8943 2111



Client Services, ABS, PO Box 10, Belconnen ACT 2616

Produced by the Australian Government Publishing Service
© Commonwealth of Australia 1997

Recommended retail price: \$15.50



2632500008965
ISSN 1326-6950